

DISCOVER
PATTAYA



COMPLIMENTARY COPY

Celebrating 30
years of excellence
with School
Principal Amos
Turner-Wardell



REGENTS
INTERNATIONAL SCHOOL
PATTAYA

A NORD ANGLIA EDUCATION SCHOOL



Established in 1994 Regents International School Pattaya celebrates its 30th Anniversary this year. With inspirational mottos such as: "Create Your Future", and "Happy Students Achieve More" the Discover Pattaya team were excited to move beyond the impressive clock tower frontage and new, blue running track to explore more of the 53 rai campus. Our guide was the school's charismatic principal Amos Turner-Wardell and we were instantly impressed by her enthusiasm. Without prompting she was keen to tell us all about the school, its teachers and pupils. During our tour Amos also engaged with the students asking them questions and getting their feedback on the newly renovated areas she was showing us.



Amos told us how fresh from University she had worked in sales, as a snowboarding instructor and also a chef in France. However, it was whilst working with the kids in France that she discovered how much she loved engaging with children. So she returned to the UK to do teacher training, specialising in English, coming to Thailand in 2017 as the Head of Regents' secondary school. When the exiting principal decided to move back to Europe, Amos successfully put herself forward for the position. "What I love is the diversity of the job" she explains "In one day I may be having conversations with parents at one of our workshops, going through a finance audit and then having a meeting about our marketing strategy. Every day is completely different and I love that".

Amos has also been very active in the renovation of unused areas of the school and those in need of upgrading. For these projects she works very closely with Kirsty who has been with the school for 25 years and is Director of Operations. They both enjoy involving the students in this process. Kirsty even presented mood boards when showing her plans for improvements to the boarding house. Ideas for this area from the students themselves were also implemented: personalised gyms for both the girls and boys areas, musical instruments, video games, books and even a pool table. The aim being to make the living areas as friendly and cosy as possible, and it has worked since boarding at Regents is currently full.



Kirsty Paiboontanasin
Director of Operations

more in you

than you think

KURT HAN



The Tuck Shop is another area which has also undergone a complete transformation with new furniture, fans, real plants and a shop selling healthy snacks. It has become a really popular hangout during lunch and break times when there can be as many as 700 kids using the area in which to socialise

30 REGENTS
INTERNATIONAL SCHOOL
PATTAYA

Although Regent's sister school in Bangkok is not part of Nord Anglia Education it has the same founder, so together they have many events planned to celebrate their success over the

last 30 years. A joint Sports competition is taking place in December but the big event is going to happen next May (2025) with the two schools' coming together to perform at a concert in the 2,000 seater Thai Cultural Center.

In the meantime work is ongoing. We saw plans for a new sixth form centre which will have an Outdoor Cafe with tables and chairs in a beautiful courtyard complete with fountain. Also an area which only a year ago was just a bit of shrub land is now

being used for the forest school's curriculum which is from the UK. With help from the school's gardeners and facilities staff it has been transformed so that the early years children (Age 2 to 6) can have lessons here with the teachers. They learn how to use tools, not just plastic toys and grow their own vegetables. This outdoor classroom space has proved to be really popular with parents, kids and teachers.

"I never thought I would stay in Thailand for more than 3-5 years", Amos tells us, "however, after meeting the kids at Regents I changed my mind. The students are so compassionate, happy and hard working - exactly what I want for my own children. Even though my son was only one and a half when I joined Regents I knew this is where I wanted him to learn and grow."



Now Amos also has a daughter at the school seen very happily in her mother's arms at this school ballet class.

Surely there is no better recommendation Amos says: "As a parent and a school leader I want the children to be safe and happy. School should be fun and it should be engaging because if kids want to come to school then the learning will happen naturally. I also want them to care about the things that really matter, to think about the environment, be compassionate and considerate of others. I'm in a really lucky position as I get to help shape that with the amazing staff that I have". We certainly wish Amos and everyone at Regents the very best. Here's to the next 30 years!



**REGENTS INTERNATIONAL SCHOOL
PATTAYA**

A NORD ANGLIA EDUCATION SCHOOL

33/3 Moo 1, Banglamung, Pong, Chonburi 20150, Thailand
Admissions Enquiries: +66 (0) 93 135 7736
General Enquiries: +66 (0) 38 418 777

DISCOVER PATTAYA

CONTRIBUTORS

Ivan Zelenkov
James Kemp
Asian Golf and More
Rodney Charman
Barry Upton
Peturday
Songpone Siriwanlert
Rick Click
Golf Asian
Steve Wade
Gloria Jones

CONTENTS

COVER STORY

REGENTS INTERNATIONAL SCHOOL PATTAYA
CELEBRATES 30 YEARS

DISCOVERING

- 08 THINGS TO DO IN THE BIG MANGO
- 12 A GLITTERING EVENT
- 20 TIME MAGAZINE'S KID OF THE YEAR
- 23 GEOFF HARRISON
- 37 ELEPHANT CAMPS IN THAILAND A BALANCED APPROACH
- 54 THE ORIGINS OF LOI KRATHONG

SPORTING AND LEISURE

- 24 SPORTS UPDATE
- 26 DISCOVER GOLFING - THE PHILIPPINES
- 28 THOMAS TUCHEL
- 29 ROYAL VARUNA'S 16TH REGATTA

EDUCATION AND BUSINESS

- 03 JAMES KEMP TALKS TO AMOS TURNER-WARDELL
- 32 LOVELL INTERNATIONAL SCHOOL
- 36 ELIZABETH LINE WINS MAJOR PRIZE

EASY LIVING

- 40 WHAT'S ON THE SMALL SCREEN
- 41 WHAT'S ON THE BIG SCREEN
- 42 TECH LIVING DYSON'S GIFT IDEAS
- 45 CONFESSIONS OF A POP TART
- 47 SUDOKU
- 49 SOLUTIONS AND IMPORTANT NUMBERS

PROPERTY AND TRAVEL

- 50 SEVILLE
- 58 TRAVEL DAILY AWARDS IN BANGKOK
- 60 SECRET GARDEN CONDOMINIUM
- 61 JOHN COLLINGBOURNE AUCTIONEERS



MANY THANKS TO IVAN ZELEKOV FOR COVER & COVER STORY PHOTOS

This Month in Discover Pattaya

Hi Everyone

In the run up to Christmas - and yes it will be here before you know it! It's good to see our contributors this month shine a light on some very worthy causes. For, as next month's issue will doubtless include many pages of how we can eat, drink and be merry, this month we'd like to have a think about others.

On our cover this month the charismatic head of Regents International School Pattaya shows us how the school is caring for our children to inspire them to be Global Citizens. We have an interview with Geoff Harrison who is keen to give us and our loved ones an alternative to nursing homes. Our new contributors Peturday who care deeply about all animals, have a refreshing and balanced take on the subject of Elephant Camps and on page 38 we report on the alarming increase in the rate of suicides worldwide. AMAR International have seen examples of this first hand right here in Thailand and urge us all to please make a call or send a message to anyone we feel may be vulnerable or alone - especially in the run up to the festive season.

We hope you enjoy all the articles in this month's edition and we're already getting quite excited to see what we can tempt you all with next month for Christmas and the New Year. Of course, dear readers I will do my best to report on as many parties as I can and don't forget if there is something you would like me to visit and write about please send an email to gloria@pattayatrader.com and I'll go take a look
All the best
Gloria x



gloria@pattayatrader.com
Pattayatrader.com [Pattaya Trader YouTube](https://www.youtube.com/channel/UC...)



DISCOVER PATTAYA MAGAZINE is produced by Glory Publishing Co Ltd. The contents of the magazine and website does not necessarily reflect the views of the editor or publishers and are solely the views of its contributors and advertisers. The publishers accept no legal responsibility for loss arising from information in this publication and do not endorse any advertising or products available from external sources. All rights reserved.

How Regents International School Pattaya Inspires Global Citizens



Regents International School Pattaya is the most well-established international school in Pattaya with enviable facilities and an outstanding record of academic achievement. But how does the school maintain this in a rapidly changing world and educational landscape? I met with Principal, Ms. Amos Turner-Wardell, to get an idea of how Regents is responding to the needs of learners and building upon its impressive reputation. Since my last visit, the school has made significant strides in physical and curricular development, enhancing its facilities to better serve its diverse student body. On a personal note, I was thrilled to bump into several former students, now at Regents. When I asked them how they were getting on, I was met with beaming smiles and stories of all the wonderful things they are learning.

Regents International School has made substantial investments into its campus, supported by Nord Anglia Education of which Regents is a member. A new inclusion wing for learners with additional needs has been constructed, showcasing the school's commitment to supporting all students. The addition of sports facilities, including a new track and upgraded swimming pool area with new changing rooms, highlights the emphasis on fostering physical well-being alongside academic excellence. Improved playgrounds with more spaces to engage with and explore, reflect the school's dedication to creating an environment that prioritises students' physical and mental health.

The introduction of a forest school, close to Early Years, and expanded curriculum offerings in both Primary and Secondary phases, mark exciting developments. New subjects, such as dance IGCSE and global perspectives, are being added to encourage students to be forward thinking, global citizens who embrace a range of interests and pursuits. The school also places a strong emphasis on fostering a sense of belonging for its diverse student population, and the student-led initiative 'Culture Club' is a good example of the students' dedication to raise awareness of the importance of Equality, Diversity and Inclusion (EDI) not only in school but in the whole community.

Ms. Turner-Wardell shared the school's commitment to fostering EDI. Events and assemblies focused on raising awareness and understanding of neurodiversity aim to create a welcoming environment for all students. The school recently won its first International School Award award for equality, diversity and inclusion, showcasing its dedication to these important values. Ms. Turner-Wardell told me "We aim to celebrate individual strengths and focus on inclusive practices that support every learner."



Regents International School Pattaya boasts impressive academic results, including 93% achieving A*-C% at A Level and an average IBDP score of 34 (the global average being 30). The school's ethos, quality of teaching and high expectations contribute to this success. A core aspect of their teaching approach is the introduction of the Nord Anglia 'Learner Ambitions' or the '6C's': encouraging students to become critical, creative, committed and curious learners, working compassionately and collaboratively in the classroom and beyond. This common language around learning helps students navigate the challenges of modern education while developing the transferable skills essential for their futures.

Regents International School Pattaya is part of a broader global community, fostered through membership of organisations like Nord Anglia Education, providing students opportunities for collaboration across different cultures and renowned organisations such as The Julliard School and UNICEF. Initiatives, like the Nord Anglia Global Campus, enable students to engage in projects with peers worldwide, building a sense of global citizenship. The school has hosted various competitions in music, writing and sports, enhancing students' international awareness. In collaboration with MIT, students engage in challenges that promote scientific inquiry and creative problem-solving, a group of budding engineers and scientists having recently returned from Massachusetts. Ms. Turner-Wardell shared an exciting project where students designed habitats capable of withstanding extreme weather conditions, encouraging hands-on learning and innovation.

As the educational landscape evolves with technological advancements, the school is proactive in integrating AI tools into learning. Ms. Turner-Wardell acknowledged the challenges of preparing students for an AI-driven future. "Our focus is on developing critical thinking skills and nurturing curiosity," she stated, emphasising the importance of teaching students to navigate an abundance of information effectively. Regents International School Pattaya is at the forefront of educational excellence, driven by the vision of Ms. Amos Turner-Wardell and her dedicated team. With continued investment in facilities, a commitment to inclusion and diversity and an innovative curriculum that embraces technology and sustainability, the school is well-equipped to foster the leaders of tomorrow.

By James Kemp Deputy Head of Mooltripakdee International School





SugarHut
1984



Enjoy Authentic
Award Winning Thai Cuisine



The Original Boutique Resort and Restaurant - Since 1984

"Soft power" has been a buzzword for a couple of years now, reflecting the Thai government's growing interest in presenting its national culture on a global stage. Thailand's soft power is rooted in its rich heritage, encompassing cuisine, and traditional arts with the hospitality and warmth of the Thai people. Sugar Hut is a unique complex that embodies all this traditional Thai charm

"软实力"已经成为近年来一个热门词语,反映了泰国政府越来越重视在全球舞台上展现其国家文化。泰国的软实力源于其丰富的遗产,包括美食、传统艺术以及泰国人民的热情好客。糖小屋酒店是一个独特的综合体,凝聚了所有这种传统的泰国魅力。



Sugar Hut Resort and Sun Sabella Complex are near
Pattaya Provincial Court on Thappraya Road,
sugarhut1984 www.sugarhut-resort.com

Tel 038 251 696-88 033 002 934/35 Please like our Facebook pages





MARVELOUS

BBQ SEAFOOD BUFFET

SATURDAY | 6:00 PM – 10:00 PM

INCLUDING FREE - FLOW SOFT DRINK

ADULT: **THB 1,450 NET** PER PERSON (FROM THB 2,121 NET)
CHILD (7 - 12 YEARS OLD): **THB 725 NET** PER PERSON (FROM THB 1,061 NET)

ENJOY YOUR BUFFET WITH FREE - FLOW BEER
THB 650 NET PER PERSON

IHG  **ONE
REWARDS**

Special for IHG® One Rewards member!
Get a 15% additional discount on food and non-alcohol beverages

 @interconpattaya
 038 259 888



AVANI

Pattaya Resort

DAZZLING PATTAYA INTERNATIONAL FIREWORKS 2024

Join us on Avani's rooftop to witness the sky explode into a kaleidoscope of vibrant colours, while you sip on cool cocktails and enjoy delicious bites.

You won't want to miss out on one of the best firework displays from the coolest location in town.

Date: 29-30 November 2024

Time: 7:00 pm - 10:00 pm

Venue: Avani Rooftop 10th and 11th floors

Price: THB 2,700++ per person

Package includes free flow drinks, live food stations and seating.

CALL NOW to learn more about our early bird and group offers.

Avani Pattaya Resort

218/2-3 M.10 Beach Road, Pattaya 20260 Thailand

T: 038 412 120 E: pattaya@avanihotels.com

AVANIHOTELS.COM



La Fiesta Carnival

La Fiesta Carnival - where Pattaya's electric energy lights up your holidays! Celebrate Christmas & New Year with vibrant beats, dazzling lights & festive fun at Pullman Pattaya Hotel G!



Christmas Eve Dinner

Adults @ THB 2,050 net including coffee & tea
24th December / 6.30 - 10pm @ The Beach Club Restaurant
Christmas-Inspired Buffet & Fresh Seafood / Acoustic Live Band

Christmas Day Brunch

Adults @ THB 2,050 net including coffee & tea
25th December / 12 - 3pm @ The Beach Club Restaurant
Christmas-Inspired Buffet & Fresh Seafood / Live DJ / Kids Buffet / Supervised Kids Activities

Ring in The New Year Dinner

Adults @ THB 2,350 net including coffee & tea
31st December / 6.30 - 10pm @ The Beach Club Restaurant
Festive-Inspired International Buffet / Fresh & Grilled Seafood

Add THB 1,000 net for free-flow house wine, local beer, selected cocktails and soft drinks
Kids (7-12 years) @ THB 900 net
Kids under 7 years eat for free

Beachfront Sundowner

Party Bed @ THB 6,000 net (Max.6)
31st December / 5.30 - 8pm @ The Beach Club Bar
Festive-Inspired Grazing Board / A Bottle of Champagne
Live DJ & Saxophonist

A Pattaya Carnival Night

Party Bed @ THB 8,000 net (Max.4)
31st December / 9pm - 1am @ The Beach Club Bar
Beachfront Party Bed / THB 3,000 F&B Credit / A Bottle of Rapeneau Champagne Brut
Live DJ / Live Fire Show / Fireworks



FOR MORE INFO
SCAN HERE!

The Beach Club Pattaya | Open every day from 11am till 9 pm (10pm on Friday & Saturday)
Pullman Pattaya Hotel G 445/3 Moo.5 Wongamart Beach, Pattaya ☎ 038 411 940-8

Discover the Magic of Family Holidays

at Royal Cliff Hotels Group, Pattaya



In the heart of Pattaya, the iconic Royal Cliff Hotels Group stands as a beacon of luxury and elegance, attracting families from around the world with its 5-star offerings. This resort has long been a favorite for families seeking lasting memories, with activities that appeal to travelers of all ages. Let's uncover the magic of a holiday at Royal Cliff Pattaya and make the most of your family trip.

Royal Cliff takes pride in catering to families of all sizes. Recently renovated, the rooms offer a luxurious experience unlike any other five-star hotel. Whether you choose a one-bedroom suite, a luxury suite, or a spacious two-bedroom suite, you'll experience unparalleled comfort. The hotel's latest addition is the Sky Aquarium Pool, the largest infinity-edge pool in Thailand, featuring an aquarium effect, mini water park, and jacuzzi. Both adults and children will find their own paradise in this unique setting. A visit to this pool and bar is a must!

Exclusive Family Packages: The 'Family Fun' package makes every family stay unforgettable. It includes free access to Funtasea Kids World, a game zone called The Verge, and delicious treats like ice cream and chocolate mousse cake. Guests also enjoy promotions on food, beverages, and spa services, as well as packages in collaboration with Pattaya's top water parks for the ultimate family adventure.



To enhance the fun, the hotel will host a Halloween party on 1 November 2024, at the Royal Cliff Beach Hotel with an 'Under the Sea Monsters' theme. Enjoy themed food and drinks, activities, face painting, and an awards ceremony for the best costume and lucky draw winner. With an average of over 300 attendees, this is one of Pattaya's most popular events.



For tennis enthusiasts, Royal Cliff will host the MT700 ITF AssetWise Tennis Masters Championship from 16 - 22 November 2024 at Fitz Club. This prestigious event features 35+ Singles, Doubles, and Mixed-Doubles matches and solidifies Pattaya as a top tennis destination. Free entry for spectators.

Celebrate the festive season at Royal Cliff with magical Christmas events, including Christmas Eve Set Dinners and a lavish Christmas Buffet Lunch, complete with live music, carol singers, and a visit from Santa. Ring in 2025 with the 'Royal Sea Adventure' New Year's Eve party, featuring live entertainment, fireworks, and a premium buffet by the pool.

Don't miss the opportunity to create precious moments with your family. Book directly with Royal Cliff for the best deals and extra benefits!



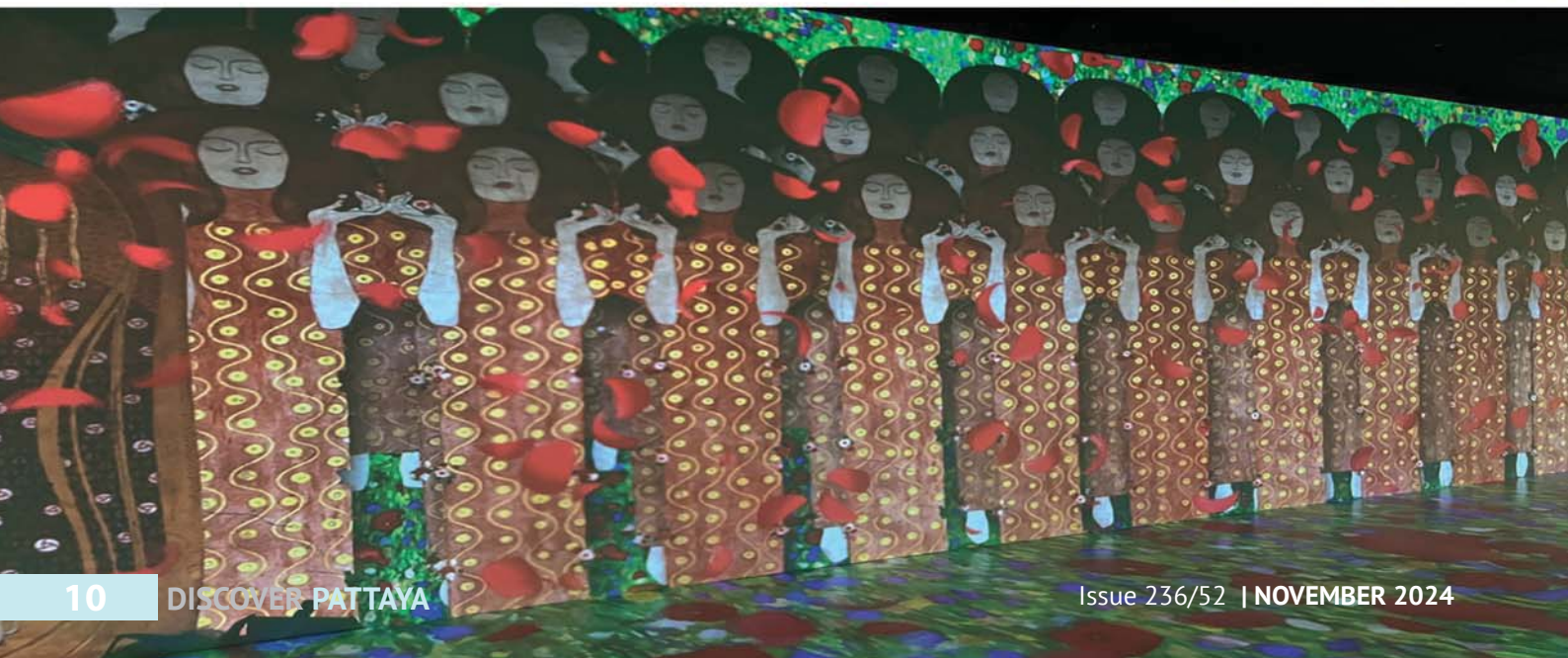
THINGS TO DO IN THE BIG MANGO Visit an Interactive Art Exhibition

Looking for something new to do in the Thai Capital? Why not visit an Interactive Art Event? Unlike conventional exhibitions, viewers are immersed in the artwork when it is projected on floors and ceilings all around them. As well as stimulating the sense of sight, those of hearing and even touch are also involved. To date, there have been several of these happenings, including those featuring works by Van Gogh, Monet, and Leonardo Da Vinci. Currently, you can see Gustav Klimt's artistry at an exhibition entitled "A Golden Kiss".

Klimt was born in Austria in 1862 and became known as one of the most influential figures in modern art. His work bridged the gap between traditional academic painting and more experimental, contemporary forms with a distinctive style combining ornamentation, and symbolism. His two brothers Ernst Klimt and Georg Klimt were also artists but never received the same fame. Georg Klimt was primarily a sculptor and Ernst trained, like Gustav, at the Vienna School of Arts and Crafts.



By Gloria Jones

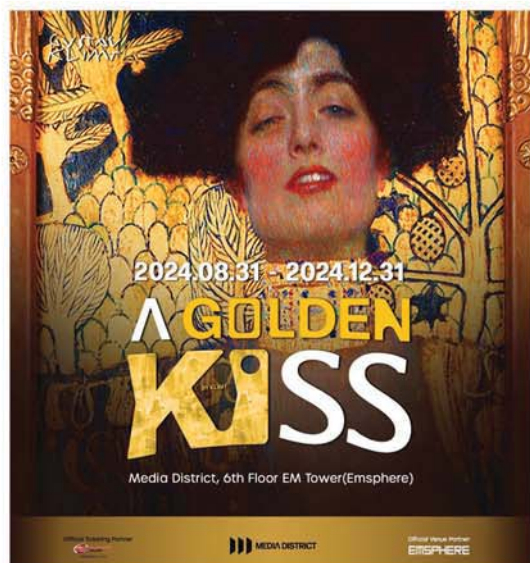
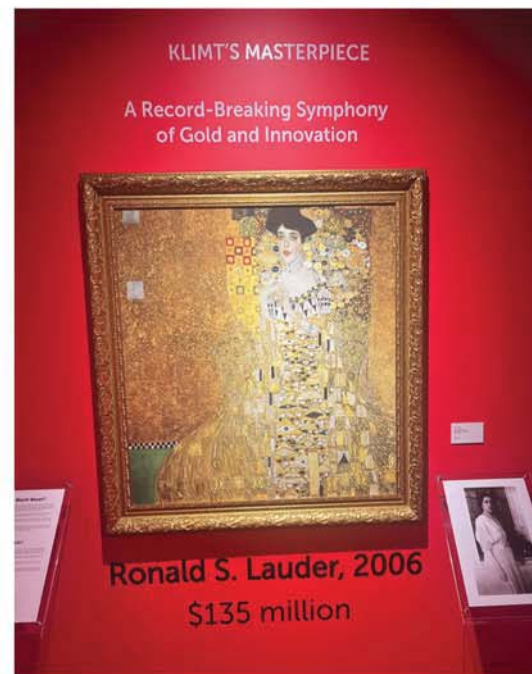




Ernst and Gustav collaborated on many large-scale murals and decorations for theatres and public buildings until Ernst's untimely death at the age of only 28. This had a profound impact on Gustav, both personally and artistically as after Ernst's death, Gustav moved away from traditional academic art, towards more avant-garde, personal work.

Gustav Klimt's works were initially considered controversial for their merging of symbolism and eroticism with unconventional depictions of human figures. However, undeterred, he formed the Vienna Secession with a group of like-minded artists who sought to challenge the traditional academic art institutions. The group included Koloman Moser, Josef Hoffmann, and Egon Schiele and together with Klimt, they embraced new, progressive forms such as Symbolism, Art Nouveau, and Modernism.

Klimt's father was a gold engraver which influenced Gustav's use of gold leaf, especially during what was termed his "Golden Phase" (1901 to 1909). This proved to be his most iconic period during which he completed his celebrated work "The Kiss". Also, "Portrait of Adele Bloch-Bauer I" which was purchased by Ronald S. Lauder (son of Estée Lauder the cosmetics billionaire) for a record-breaking \$135 million. It was the highest price ever paid for a painting at that time.



The piece had been at the centre of a long restitution battle after being looted by the Nazis during World War II, The story was later made into a film "Woman in Gold" starring Helen Mirren. Telling the story of the niece of Adele Bloch-Bauer, Maria Altmann, it depicts the legal battle she had to reclaim her family's stolen artwork.

Gustaf Klimt died in 1918 but his works influenced later movements such as Art Deco, and many other 20th-century artists wishing to break boundaries between fine art and decorative art. Today he is celebrated for pieces which have become iconic symbols of love and beauty. You can see them wonderfully displayed and accompanied by marvellous music when you visit.

'A Golden Kiss' at Media District, 6th floor, Em Tower, Emsphere Bangkok
Until 31st December 2024.

Open Daily from 10:30 am - 9:00 pm
750 baht on weekdays and 850 baht at weekends
(390/450 for under 23 and over 65-year-olds)

EDENKO Chaipayruek 2

Table 29.990.-



Rope Chair
3.590.-

Bar Table 14.990.-



Bar Chair
4.290.-



Ocean Sofa
37.990.-



Frio Corner
Table
36.990.-
12.990.-

49.990.-



Table
3.490.-

56.990.-



Pattaya :
Chaipayruek 2 Tel : (Fr) 085 363 5353 (Th) 063 899 5876

Phuket :
Charlempriat 4024 Hafele Center Tel : (Th/Eng) 061 930 8800
edenkothailand.com



EDENKO Chaiyapruerk 2

New Edenko Indoor Decorations



Pattaya :
Chaiyapruerk 2 Tel : (Fr) 085 363 5353 (Th) 063 899 5876

Phuket :
Charlemprakiat 4024 Hafele Center Tel : (Th/Eng) 061 930 8800
edenkothailand.com

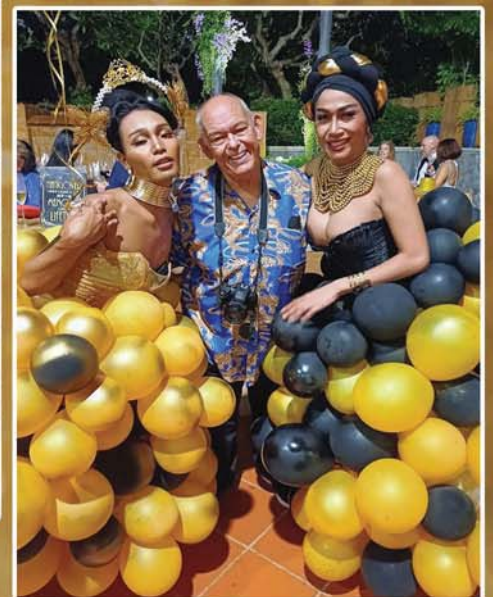
EdenKo อีเดนโก้
Outdoor Furniture
by French Design

Glitz & Glam Gala night





She's done it again! Another amazing Sold Out event. Violette Gautier and her team at the Pattaya Gastronomic Society held their Glitz & Glam Gala Night at the InterContinental Pattaya Resort. Congratulations on an evening of fantastic food, and wine with entertainment from Coco Zhu, Melanie Ford, Jayson Talla Camilo and Nicole. Thank you Rodney Charman for the photos!





CAFE LA PLAGES

*Pattaya's restaurant by the sea
Watch the Sunset from our Stunning Rooftop Area*

Enjoy Delicious Western and Thai Food
Large selection of Beers, Cocktails and Wine
Live music every night from International singers



At the corner of Pattaya Klang and Pattaya Beach Road
Open Everyday 11 am.-2 am. Contact K.Pui for reservation
Telephone 094 612 4265



CHRISTMAS FAIR is COMING!

Join us at HOLIDAY INN PATTAYA

SUNDAY NOVEMBER 17th, 10am – 4pm.

Bring your Family & Friends to see Santa and shop early for Christmas.

Many new things to see plus your favourite vendors. Great (Xmas) Shopping!!

Plus the Christmas Raffle with amazing Prizes to be drawn at 3pm on the day!

Entrance only 100bt - Children under 12 FREE

Contact pilchristmasfair@gmail.com for more information –
some vendor opportunities still available.

Funds raised from the day are directed toward Pattaya recipients, largely via the **Mercy Foundation (Pattaya)** to support education scholarships, English language training and food programs for local at-risk families.



Pattaya International Ladies Club

A social club for women in Pattaya!

NATANI'S

Restaurant

038 251 250

406/333 M.12 Thappraya road

natans2008@hotmail.com

HEMINGWAYS

JOMTIEN



414 / 21 Moo 12, Thappraya Rd.,
Pattaya, Chon Buri

Contact 064-620-9225
www.hemingwaysjomtien.com



ROMSAI BRASSERIE

Authentic Thai Cuisine, Book for Events, Rooftop Entertainment, Salsa and Thai Dancing Shows Daily.



TEL: 094 612 4265
Email: Romsaibrasserie66@gmail.com
<https://beacons.ai/romsaibrasserie>
Open 11am - 2.00am



OPEN 24 HOURS

GOOD FOOD FOR GOOD HEALTH



PATTAYA-KLANG 0 3836 0171
PATTAYA- TERMINAL 21 0 3325 2000

PIZZA ^{of} the MONTH



*Explore our diverse menu featuring
over 30 unique pizza varieties.
A rich selection of traditional
Italian dishes. An impressive wine
cellar, many available by glass.*

NOVEMBER'S SPECIAL PIZZA
GARLIC CREAM, MOZZARELLA, PROVOLONE,
BACON, MUSHROOMS, CARAMELIZED ONION.



6pm until 10pm
ALL YOU CAN EAT
 pizza, pasta & salad
Buffet **299 THB**
 PER PERSON



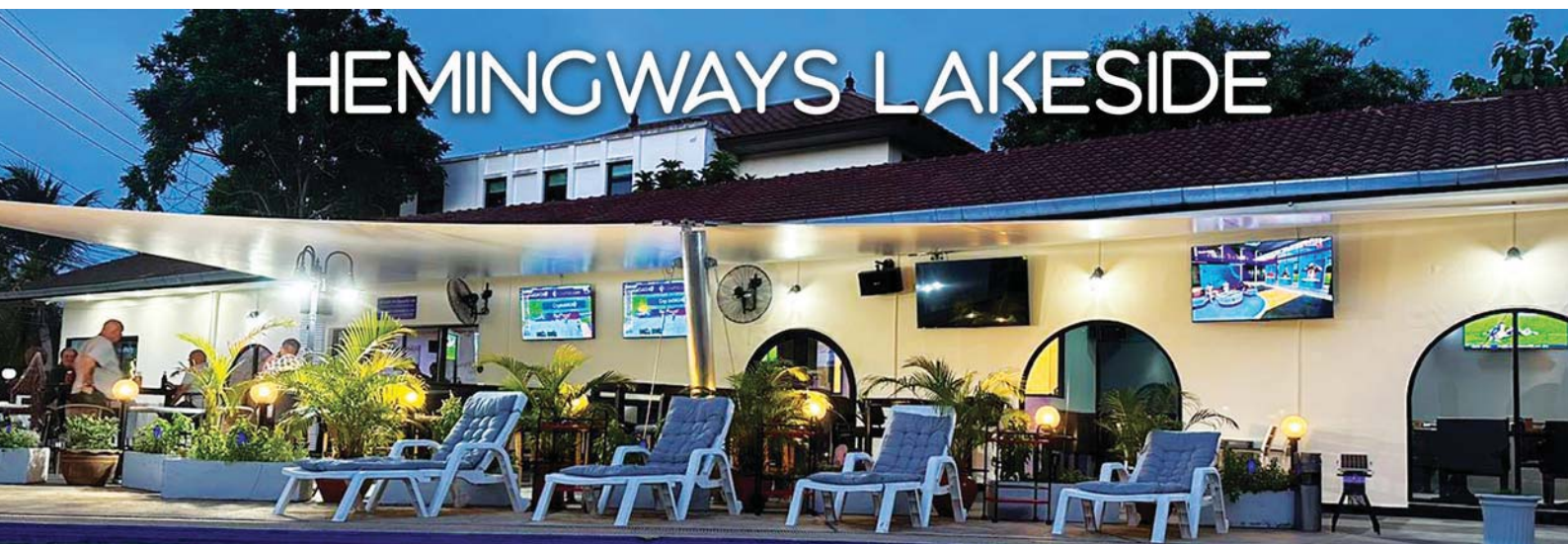
FRIDAYS JUST GOT BETTER

2 FOR 1 COCKTAILS
 FROM 6PM UNTIL CLOSE



www.facebook.com/TheSportsmanPattaya www.sportsmanpub.com

HEMINGWAYS LAKESIDE



Hemingways Family Friendly Restaurant and Sports Bar on Mabprachan Lake has 14 Big Screen TVs with Sports on Demand, an Outside Pool and indoor air conditioned seating. Its a great place to enjoy Traditonal pub grub, Daily and Weekly specials an of course the popular Sunday Carvery. Plus now there's a Kids area complete with playstations, pool table, table tennis and table football.



11/ 2.moo 4 pompranamt road
 Mabprachan lake



Tel: 095 078 2567
hemingwaylakeside.com



Make a splash at

ramayana
water park

Ramayana is Thailand's biggest water park, being larger than 160,000 square meters, the water park is like a beautiful tropical paradise, surrounded with lots of tropical plants and trees. Which create plenty of shade, so you can enjoy your time here without the sun beating down on you.

The park's name itself is a tribute to the captivating world of Ramakien, one of Thailand's most popular national epics. Explore ancient Thai legends and myths at its 26 water slides and 4 zones, which are adorned with mythical creatures and fantastical themes.

Whether you're seeking extreme thrills or a cosy, relaxed experience, you will find something for you. Immerse yourself into a world of exciting water adventures at Thailand's must-visit attraction!



FAMILY FUN FOR EVERYONE

Ramayana caters to families of all ages. From heart-stopping plunges on the Aqua Loop and Free Fall to the relaxing meander of the Lazy River and Revier Slide, there's something for everyone. Feeling competitive? Race your friends down The Mat Racer or challenge them to a duel on the Duelling Aqua-Coasters!

EVENTS AND ACTIVITIES

Ramayana is all about creating a complete exciting experience. The park regularly hosts events like foam parties, fire shows and live music, keeping the energy high. Feeling peckish after all that splashing? Grab a bite at one of the many restaurants or cool off with a refreshing drink at the Monkey Beach Club.

SAFETY IS RAMAYANA'S SUPERPOWER!

At Ramayana Water Park, guest safety is always the highest priority. Every lifeguard at Ramayana is certified by Ellis & Associates, the global leader in water safety. Moreover, Ramayana isn't just a water park, it is also an official training center for Ellis and Associates, offering international quality Lifeguard, First Aid and Swimming courses to the Thailand community!



FREE!
Entrance

for children under 106 cm!

TIME Magazine's 2024 Kid of the Year

Heman Bekele

When he was just 7 years old Heman Bekele had a fascination for “potions” mixing up whatever he could get his hands on at home “Dish soap, laundry detergent, and common household chemicals,” he says of the ingredients he’d use. “I would hide them under my bed and see what would happen if I left them overnight. There was a lot of mixing together completely at random.” He had been given a chemistry set that came with a sample of sodium hydroxide and began looking up chemical reactions online. He learned that aluminum and sodium hydroxide could together produce heat and almost started a fire.

After that, his parents kept a closer eye on him and having adults watch what he does is something that Heman, now 15, would get used to. These days, a whole lot of people are paying him a whole lot of attention. Last October, the 3M company and Discovery Education selected Heman, a rising 10th-grader at Woodson High School in Fairfax County, Virginia, as the winner of its Young Scientist Challenge. His prize: \$25,000. His accomplishment: inventing a soap that could one day treat and even prevent multiple forms of skin cancer.

It may take years before such a product comes to market, but this summer Heman is spending part of every weekday working in a lab at the Johns Hopkins Bloomberg School of Public Health, Baltimore, hoping to bring his dream to fruition. “I’m really passionate about skin-cancer research,” he says, “whether it’s my own research or what’s happening in the field. It’s absolutely incredible to think that one day my bar of soap will be able to make a direct impact on somebody else’s life. That’s the reason I started this all in the first place.”

Born in Addis Ababa before emigrating to the U.S. with his family when he was 4, Heman’s earliest memories were of seeing laborers working in the blistering sun, with no protection for their skin. His parents taught him and his sisters about the dangers of too much time outdoors without sunscreen or proper clothing. “When we came to America, I realized what a big problem the sun and ultraviolet radiation is when you’re exposed to it for a long time,” Heman says. He started to think about how he might help. And read about imiquimod, a drug that can help destroy tumors and usually comes in the form of a cream, prescribed as part of a cancer treatment plan. Heman wondered if it could be made available more easily to people in the earliest stages of the disease. A bar of soap, he reckoned, might be just the delivery system for such a lifesaving drug, not just because it was simple, but because it would be a lot more affordable than the \$40,000 it typically costs for skin-cancer treatment. It’s that ambition—to say nothing of that selflessness—that has earned Heman recognition as TIME’s Kid of the Year for 2024.

There was only so much Heman could do on his own, but in 2023, he submitted a video explaining his idea to the 3M challenge, went to the company’s HQ in St. Paul, Minn., to deliver a pitch in front of a panel of judges and won the \$25,000 prize. However he still needed a professional lab in which to work and that opportunity arrived when he attended a networking event hosted by the Melanoma Research Alliance. There he met Vito Rebecca, a molecular biologist at Johns Hopkins in Baltimore who says: “I remember reading somewhere about this young kid who had an idea for a skin-cancer soap, and I thought, how cool, to make it accessible to the whole world.” After meeting Heman Rebecca agreed to sponsor him and invited him to work at the Baltimore lab between schoolwork..

Since then Heman and Rebecca have been researching mice, injecting them with strains of skin cancer and preparing to apply the lipid-bound, imiquimod-infused soap to see what the results are. Heman says “there’s still a long way to go”—not just testing the soap, but also patenting it and getting FDA certification, which can take a decade altogether. It is a measure of Heman’s enormous head start that when that decade passes, he will still be only 25 years old—the age at which medical students have not even completed their postgrad education. He says “A lot of people have this mindset that everything’s been done, there’s nothing left to do. To anybody having that thought, [I’d say] we’ll never run out of ideas in this world. Just keep inventing. Keep thinking of new ways to improve our world and keep making it a better place.”



DEUTSCHE DENTAL CLINIC

Dr. Ramin, the only German dentist / implantologist in Thailand

- More than 30 years professional experience
- Consultation and quotation free of charge
- Hygiene according to EU standards
- Minimum invasive surgery
- German quality - Thai prices
- All materials and equipment imported from Germany
- Newest digital X-ray unit - very low radiation.



We are located inside TW Jomtien Beach Village
Soi 12 Theprasit Rd
GPS: 12.906340 100.874026

Location



OPEN
MONDAY - FRIDAY
10:00 a.m. - 6:00 p.m

MOBILE, LINE AND WHATSAPP +66 61 61 555 43
www.travel-dental.com
E-Mail: traveldental@aol.com



ASIAN OPTICAL

When did you last have your eyes tested?



Like regular trips to the dentist having your eye tested is something we often forget to do and yet we should get them checked at least once a year.

There are many opticians in Pattaya and quite often on our Facebook sites Pattaya Trader - Discover Pattaya and Pattaya Trader Expat Ladies Group we are asked to give recommendations. Asian Optical on Pratumnak Soi 4 is the only one we recommend. This is because unlike some other opticians that are little more than shops selling glasses in Pattaya Asian Optical can give you a proper eye test and they also have a fantastic selection of frames, lenses and contact lenses.



Contact Khun Charn for an appointment
091 7499965 and remember that if you wear
contact lenses you need to take them out at least 3
hours before you are due to take your test.
FB Asian Optical email V_impress@hotmail.com
Soi 4, Pratumnak, Pattaya, Chon Buri
Telephone 081 001 0418, 0822151709
ID Line Kamol Meng





Geoff Harrison of Scarisbrick International

Geoff Harrison is a man with a mission. He wants to make life better for us all as we get older and perhaps find ourselves in need of some extra care and attention. Back in 2013 he created Angels Care in Malaysia, going on to successfully launch it in Australia and now bringing the concept here to Thailand.



Angels Care is a great idea as it provides professional nursing and caregiving right in your own home with a free no-obligation quotation based on your own, specific requirements. Now with the collaboration of several developers right here in Pattaya Geoff has created a superior offer to ensure that even the most vulnerable of us have an alternative to going into a Nursing home.

Scarisbrick gives you or your loved ones the opportunity to enjoy an Elite Lifestyle with 6 star 24/7 services in a luxury residence. It's a great idea and when meeting Geoff recently I asked why he had settled on Thailand for this concept? After all, with a distinguished career as a civil engineer, contractor, and developer (including Director of Projects for the prestigious Medini Iskandar Malaysia Sdn Bhd in Johor Bahru), Geoff had lived and worked in Malaysia, Pakistan, Fiji and Australia.



Born in Australia, Geoff explained to me how we had been asked by the Government to advise on retirement villages and solutions to the country's problems of providing quality nursing and care. Before CoVid the Government at that time had been keen to find alternatives to expensive and often outdated nursing homes. With cases of Alzheimer's on the increase safety was also a concern for the Aged Care in Oz. After the pandemic the Incoming govt embraced wholeheartedly Geoff's suggested methodology and amended the Australian Legislation to reduce "In-home 24/7 Care" wage laws by 70% to make it more affordable

Geoff was then ready for a new challenge he began to look elsewhere, not only for a new base for his companies but also to find where he himself would ideally want to retire. "I could see potential for a peaceful life, safe and affordable. Particularly enjoying the prospect of living in Pattaya by the sea with a relaxed lifestyle, I was also impressed by the friendliness of the Thai people." he told me. We then discussed how in Thai Culture there is a greater level of respect afforded to the older population than in many other countries. In fact since interviewing for nurses here in Pattaya Geoff has found them to be particularly kind and attentive making for ideal carers and companions. He was also pleasantly surprised by just how quickly and easily he was able to get a blood test and prescription filled. "Back in Australia that would have taken days not just the ½ hour for only 30 bucks (Australian dollars) I paid" he tells me



"I also believe there is also a real demand for this level of care for people looking to see that their parents or loved ones have an alternative to what's being offered in their own country. I have recently heard from an American gentleman in Alabama who is concerned for his mother. The house next door to hers has been broken into by Guatemalan refugees and he worries that she is now no longer safe in her own home."



Certainly the price of nursing homes and the scandalous reports of how elderly inmates are simply dosed with medication and left perhaps for hours each day sitting in front of a TV have many people concerned about the fate of their parents . Also, world wide an increasing number of elderly people are now living longer than ever before and want a better standard of living for their retirement years.

So yes we are indeed fortunate to be living here in Pattaya and certainly the developers Geoff is working with to provide I am sure that along with the developers of such great looking condominiums as Millenium Tower and soon to come on board Grand Solaire Scarisbrick will have some solutions so that we will NEVER have to go to a Nursing home!



RETIRE IN 6-STAR LUXURY ARCADIA MILLENNIUM TOWER, PATTAYA, THAILAND

YOU OWN THE CHANOTE!! STARTING FROM BHT 5.8 MILLION

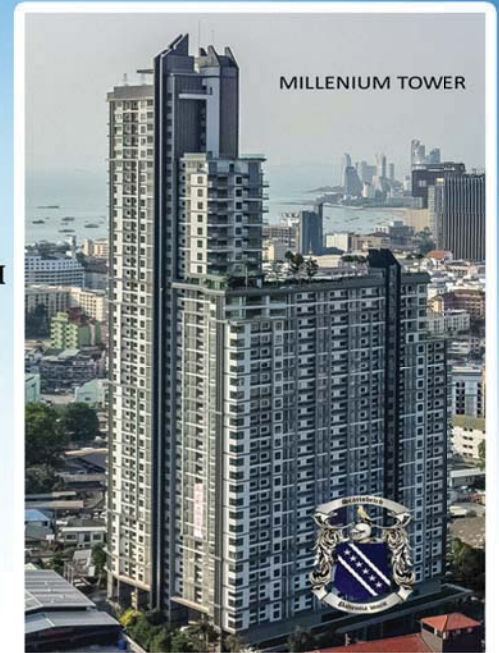
SCARISBRICK SERVICE FEES LOCKED FOR 2 YEARS - BHT 22,000 PER MONTH

24/7 PUSH BUTTON SERVICES FOR BUTLER, CONCIERGE, HOUSEKEEPING.

LAUNDRY, IRONING, DINING, NURSING & CAREGIVING

CLUB WELLNESS ACTIVITIES, COMMUNITY ACTIVITIES.

ALSO WE GUARANTEE 10% RETURN P.A. FOR 2 BEDROOM AND 8% P.A
FOR 1 BEDROOM



NEVER HAVE TO GO TO A NURSING HOME!!

Contact us at

WWW.SCARISBRICKINTERNATIONAL.COM

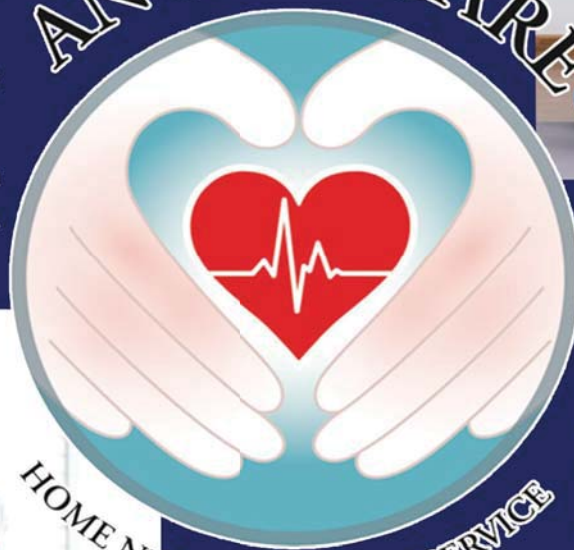
HOME HEALTH CARE SERVICE

Do you or your loved ones need a nurse or care giver who can come into the home to give home health care service?

Angles care have already been providing this in Australia and now bring this service to us here in Thailand.

To assess your requirements and give a personalized quotation contact us now.

ANGELS CARE



HOME NURSING & CARE SERVICE



"Angels Care has been excellent for home care services. They are always responsive, and work on solutions to help patient and family members with any needs or feedback.."

Eileen Teoh



contact.angelscare@gmail.com
www.angels-care.co

Sports Update

For November by Steve Wade

The Premier League rolls on throughout November, in spite of yet another international break mid month. Highlights include the visit of Chelsea to Manchester United on the 3rd, Liverpool host Aston Villa on the 9th, the London derby between Chelsea and Arsenal is on the 10th and the heavy-weight clash between Manchester City and Liverpool is at the end of the month. Both Chelsea and Liverpool have a particularly tricky fixture list coming up over the next month or so and any pretensions they may have towards a title challenge will become much clearer afterwards.

The DP World tour, otherwise known as the European tour, comes to a climax with the Abu Dhabi HSBC golf championship, being played from the 7th - 10th of the month. This is followed by the DP Tour championship, with prize money of over £9,000,000, which is being played in Dubai from the 14th - 17th. This is one of the few occasions when the European tour draws the spotlight away from the tour in the USA. These are top quality events and the time difference between Thailand and the Middle East make it ideal viewing for the golf following locals.

November is the month when the Melbourne Cup is run in Australia at the Flemington racecourse in Melbourne. Billed as “the race that stops a nation”, for many Australians the first Tuesday in November, which this year falls on the 5th, is de facto taken as an unofficial public holiday by huge swathes of the population. Schools and offices close and people gather together to watch the great race in their homes and pubs and clubs across the country. With prize money well North of six million dollars, the race is now targeted by horses from around the world and has become a true international event. A 3pm off time will mean an early start for race fans in Thailand.

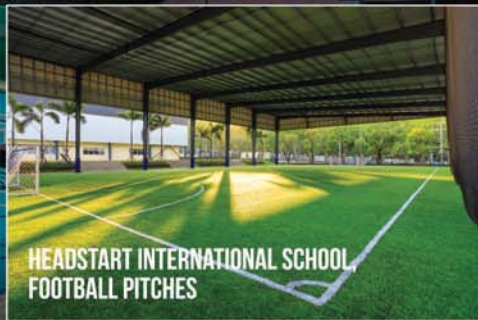
That’s about it for November. Happy viewing to sports fans everywhere.



PLANNING, SUPPLYING AND BUILDING

ASIA'S RECREATIONAL INFRASTRUCTURE

Sports Engineering And Recreation Asia Ltd works with architects, project managers, and owners assisting in the planning, design, space utilization, product requirements, budgets, maintenance, and market appeal. This technical support, coupled with decades of experience is what separates Seara from trading companies.



Contact Seara for all your fitness, sports, and leisure amenities:

T: +66 (0) 2185 1921

Searasports.com

info@searasports.com

facebook.com/searasports



DISCOVER GOLF ABROAD

THE PHILIPPINES



A Unique Course...Where Philippines, US History and Golfing Excellence Meet

The exquisite Mimosa Plus Golf Course lies nestled amidst the lush greenery and rolling hills of Clark Freeport Zone in the Philippines. This world-class golfing facility is known for its stunning landscape, challenging fairways, rich history, and significant relationship with the US Armed Forces.

The origins of the Mimosa Plus Golf Course can be traced back to the 1960s when the United States Air Force established its Clark Air Base in the region. At its peak, the base had over 15,000 personnel. With a strong tradition of promoting recreational activities for its military personnel, the US Armed Forces developed a golf course catering to the golf enthusiasts stationed at the base.

The golf course, originally constructed in 1969, is known as the Mimosa Golf and Country Club. It attracts military personnel and civilians alike. Mimosa was the only Philippine golf course Tiger Woods played on. He played one-on-one with then-Philippine No. 1 Cassius Casas in his first international exhibition.





The former US air base was damaged in 1991 by the eruption of Mount Pinatubo, and as a result, the US military abandoned the base and its 18-hole course and returned it to the Philippine authorities.

Golf architecture firm Nelson & Wright was hired to design a completely new 36-hole golf complex on the former Clark Field.

Today, Mimosa Plus Golf Course is a testament to the close bond between the US Armed Forces and the Philippines. The golf course not only provides a significant source of recreation but also serves as a reminder of the strong ties between the two nations.

The course is now spread across 77 hectares of rolling terrain and features 36 holes divided into the Acacia and the Lakeside. Both courses provide a unique blend of challenging holes, breathtaking views, and a serene atmosphere that allows golfers to connect with nature.

Mimosa Plus Golf Course will be one of the courses used in the 1st Philippines Golf Invitational on February 16-21 2025. To join in the fun check out <https://www.philippinesgolftournament.com/>



This edited article is republished
by kind permission of
Asian Golf & More at
<https://www.asiangolfandmore.com/>



THOMAS TUCHEL - ON A HIDING TO NOTHING?

As the new England manager, Thomas Tuchel has taken on the most intensely discussed job in all of football. The various comments both for the appointment and against suggest that he should expect much more of the same. Despite his credentials for the job, including the Champions League with Chelsea in 2021, when he was named the best club manager in the world, he has also collected ten other trophies in a fifteen year career. On top of that his record in knockout competitions is excellent, which is essentially what the England job is all about.

The nonsense spoken about the FA appointing a “foreign manager” doesn’t wash at all. It’s because he’s German, pure and simple. The national team has had two managers from different countries previously and there was nothing like the uproar there has been about Tuchel.

It may be that this clamour for Gareth Southgate to be replaced is the perfect example of “be careful what you wish for” in managerial terms. Whatever you thought of Southgate, his record compared to previous England managers was phenomenal. Two European finals and the latter stages of two world cups is the best record of any manager since 1966 by some distance, but in national football, as Vince Lombardi once said, “winning isn’t everything, it’s the only thing”.

The rubbish spoken by various news outlets about the appointment is understandable, given they have to appeal to their blinkered audience to keep the clicks coming, but the reaction of some ex international players has been laughable. The cry went up of “England should be managed by an Englishman” despite the fact that the national team has already had two previous foreign incumbents. The fact is that nothing less than a win in the European Championship or the World Cup itself will keep the criticism at bay. Anything else will be compared unfavourably to what Southgate achieved,

On a purely tactical front, the appointment of Tuchel looks like good business, given his record in knockout competitions. The different approach needed to successfully manage a national team might well suit Tuchel and he’ll be looking forward to the knockout stages of the major competitions with relish and the chance to pit his wits against the best in the business. One thing is for sure, nothing less than a win in one of the big ones will do. Let’s hope it happens.



The Royal Varuna Club Held their 16th Eastern Seaboard Regatta

Discover Pattaya were delighted to attend the awards ceremony and would like to congratulate all the sailors who received their awards in this year's competition. Also thanks to the sponsors The Yacht Sales Co., Element6 Evolution, Pattaya Water Sports Shop, and Watchara Motor & Marine Sport Solution Center for giving all the children such a great time:



 **Easy** 
ABC

Language School Pattaya
since 2008

Education Visa

Live in Thailand
with an ED - Visa
while studying
with us

For ages 12 - 49



Owner & Founder:
Wolfgang Payer



Easy ABC
Language School



More Infos about
Easy ABC



Our Courses

Thai, German, Russian,
English, and Computer courses
are tailor made to give YOU
the best possible experience

Also available as
Group, Private, and
Online LIVE Classes

About Easy ABC

The winner of the ASEAN
Awards 2016, a leading
and reliable source
of education in Pattaya

Other available courses also
include German A1 - B2 and
Computer Graphic lessons



International staff available at all times



**MIS - WHERE YOUR CHILD THRIVES
ACADEMICALLY AND SOCIALLY
WE PREPARE CHILDREN FOR SUCCESS**



MOOLTRIPAKDEE INTERNATIONAL SCHOOL
Call 092-3261188 or e-mail enquire@mis.ac.th
to book a school tour.

LOVELL INTERNATIONAL SCHOOL



Khun Beau's Vision

Reflecting on my previous visit to Lovell International School, I was eager to return and witness the continued evolution of this remarkable institution. Nestled in the heart of Naklua, Lovell International School stands as a beacon of innovative education, guided by a vision that is as unique as its surroundings. At the heart of this institution is Khun Beau, the founder and driving force behind its philosophy. Her journey into education began during the challenges of COVID-19, a time when she became deeply concerned about the isolation many families experienced and the apparent lack of compassion that emerged from living in bubbles. This concern was not just a fleeting thought; it was a reflection of her deep care for the next generation and their impact on the world.

As a mother seeking the best educational environment for her young daughter, Khun Beau explored numerous options but struggled to find a school that resonated with her values. Drawing from her family's background in development - specifically, owning the Cape Dara Resort - she recognised the importance of creating a nurturing space for children to thrive. After considering various educational philosophies, including Montessori, she ultimately fell in love with the Reggio Emilia approach, which emphasises exploration, creativity and child-centred learning. Khun Beau's commitment extends beyond academic excellence; she aims to foster personal growth, confidence and self-esteem in every child. Central to her philosophy is the idea of collaboration with parents, ensuring they feel integrally involved in their children's education. Lovell International School actively encourages parental participation, creating a strong community bond that enriches the educational experience for students.

The classrooms are filled with light, colours and warmth of natural materials, creating inviting spaces designed to stimulate creativity and collaboration. Each corner of the school reflects a commitment to creating a nurturing atmosphere where children feel safe to express themselves and explore new ideas. A particularly impressive aspect of Lovell International School is its architectural design, which serves as a 'third teacher'.

Khun Beau was impressed by the architects who designed the school, known for their work on prominent institutions like Bangkok Prep. The building and its natural surroundings play a crucial role in enhancing the learning experience, helping students develop essential executive functions - skills that are vital for success both in and out of the classroom.



During my recent visit, I was thrilled to see how this philosophy continues to flourish within the school's vibrant environment.

Adding to this vision is the new Head of School, Mr. Michael Waters, an experienced educational leader from the UK. Michael has worked extensively in various international settings, most recently serving as Head of Primary at a large school in Vietnam. He turned down offers to join the leadership teams of larger schools, wishing to avoid the 'big corporate' environment and focus on where he knew he could make a real difference and where his own educational philosophy aligned with that of the school. Khun Beau was heavily involved in Michael's recruitment, demonstrating her commitment to finding the right person for the job. She even flew out to Vietnam to meet him before offering the position. This level of personal investment underscores her dedication to building a strong team that shares her vision for the school.

Michael's educational philosophy mirrors the principles of the Reggio Emilia approach, focusing on fostering curiosity, creativity and critical thinking among students. He understands the importance of a supportive and inclusive environment, where every child feels valued and empowered to take risks in their learning. Michael also places a strong emphasis on building relationships with parents and the community. He believes that education is a partnership and that involving families in the learning process enriches the experience for everyone involved. "We want parents to feel like they are part of our school community", he remarked. Certainly, Lovell International School is a testament to the vision of Khun Beau and the fresh perspectives brought by Michael Waters. Together, they create a nurturing, child-centred environment where students can thrive, explore and become the best versions of themselves. A priority for Michael, and Lovell in general, is ensuring the students transition from the Early Years to primary seamlessly where they prepare them to meet the highest academic standards and excel at a global level.



As the school continues to grow, it remains dedicated to fostering responsible, empathetic citizens ready to make a positive impact on the world.

By James Kemp Deputy Head of Mooltripakdee International School



British Curriculum Kindergarten

The Early Years Foundation Stage
Play-based with forest school activities

Pre Nursery - Year 2
Aged 2-7



**OPEN FOR
ADMISSIONS**

🌐 lovellschool.ac.th
📍 Soi 16/1 Pattaya - Naklua Rd.

098 098 4595



NEW!

**Thai Course
Beginner Level**

October, 8th 2024

NEW!

**English Course
Elementary Level**

October, 21st 2024



Get your **FREE** Easy ABC Wall Calendar 2025



Only while stocks last.
1 Calendar per Person.



**Advertise your
own business
here!**

**Starting from
99 Baht / piece.**

**Contact us for
a quotation!**



Location

www.easy-abc-th.com

+66 (0)38 251 952

+66 (0)89 881 9873



391/127 Thappraya Road Soi 11
Nongprue, Banglamung, Chonburi

The Only PYP school on the Eastern Seaboard

The Eastern Seaboard's highest performing International School, welcoming a global community of students aged 2-18 years, is located just 30 minutes from Pattaya and Rayong.

Visit us today.



St. Andrews
International School
Green Valley



greenvalley@standrews-schools.com



www.standrewsgreenvalley.com

☎ 038 030 611



Gaining wealth is a challenging endeavor, and there are no shortcuts.

It requires discipline, planning, and adaptability to changing circumstances.

Consider seeking professional guidance for a comprehensive financial plan.



Book your personal review
At our cost

www.corestone.online

info@corestone.online

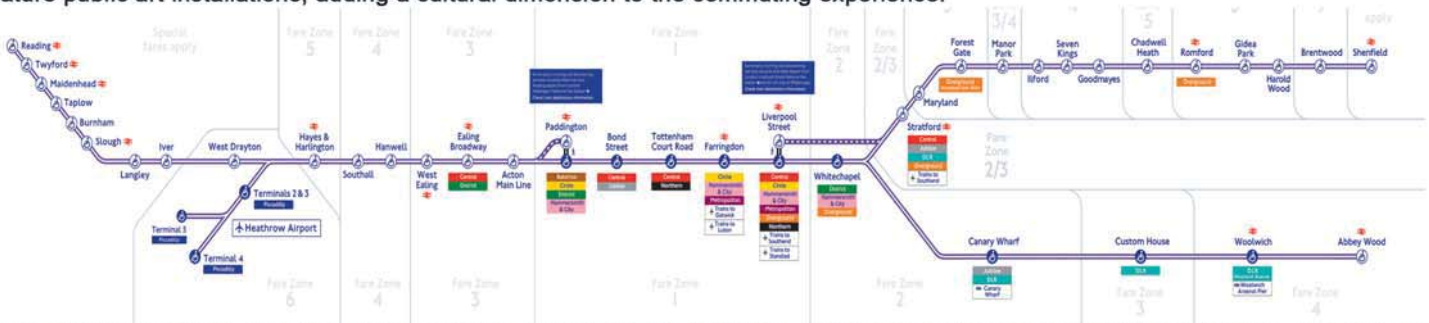
The Elizabeth Line Wins The Prestigious 2024 RIBA Stirling Prize.

The Elizabeth Line is a game-changer for London's transport network. Named in honor of Queen Elizabeth II, it is a part of Transport for London (TfL) and stretches over 100 kilometers (about 62 miles) from Reading and Heathrow in the west to Shenfield and Abbey Wood in the east. The line was completed in 2023 at a total cost of around £18.8 billion and now provides a high-capacity, high-frequency rail link connecting east and west London.



One of the unique features of the line is its integration with existing National Rail services. Passengers can use the Elizabeth Line not just for travel within London, but for longer journeys, including trips to outer suburbs and other major transport hubs like Heathrow. This integration makes it one of the most connected lines in the city's rail network. The line also passes through central London from Paddington to Abbey Wood and consists of 41 stations, 10 of which are newly constructed, built to accommodate the line's longer and more modern trains.

Key central stations such as Bond Street, Liverpool Street, and Farringdon have been completely transformed to cater to high volumes of passengers. They have wider platforms, step-free access, and improved signage, ensuring that the line is fully accessible to all users. Designed to be spacious, modern, and user-friendly these stations have high ceilings and plenty of natural light. They also feature public art installations, adding a cultural dimension to the commuting experience.



Recently the Elizabeth Line won the prestigious 2024 RIBA Stirling Prize, which celebrates excellence in architecture. Recognizing the impressive design and engineering collaboration led by Grimshaw Architects, the project was praised for its modern, sleek, and intuitive aesthetic, creating a calm and efficient passenger experience, while also incorporating sustainable solutions.

The social impact of the Elizabeth Line is equally important, providing faster and more reliable travel for Londoners and commuters from the surrounding areas, drastically reducing journey times and significantly easing congestion on existing lines, particularly the Central, Jubilee, and District Lines.

The new line also aims to support business growth and create new jobs by improving connections between key financial districts like Canary Wharf and Heathrow. It has been hailed as a monumental achievement in urban transport and civic infrastructure, transforming London's public transit network

The Reality of Elephant Camps in Thailand: A Balanced Approach



Elephant care in Thailand has often been misunderstood, particularly by Western tourists who may be influenced by extreme narratives advocating for "no chain, no hook" policies. While well-intentioned, these viewpoints can be unrealistic and even harmful to the elephants themselves, ignoring the complex needs of managing elephants in captivity.

Since the 1989 ban on logging, thousands of elephants became jobless, and releasing them into the wild wasn't feasible due to the lack of habitat. Today, ethical elephant camps depend on tourism to cover the high costs of caring for elephants—about 540,000 Baht (\$16,000) per year for food, shelter, and medical care. Without tourism, many camps would struggle to maintain proper welfare standards.



Criticism of using hooks and chains is often based on misconceptions. When used correctly, a hook allows mahouts to guide elephants safely, preventing dangerous situations, while chains give the animals enough freedom to roam and interact without risking injury. Contrary to popular belief, some "no chain, no hook" camps resort to locking elephants in enclosed spaces, which is far more stressful, comparable to imprisoning humans. Elephants need to move, socialize, and engage with their environment to stay mentally and physically healthy.

Elephant rides, when properly managed, are not harmful. Research shows that elephants can carry up to 25% of their body weight without stress, while two tourists on a fitted seat only account for around 10%. Rides provide essential exercise and stimulation, preventing boredom and aggression.



Calls to boycott elephant camps are not a solution. Tourism helps cover the costs of care, and without it, many elephants would suffer. Instead of supporting extreme views, tourists should look for ethical camps that balance welfare with the realities of elephant care.

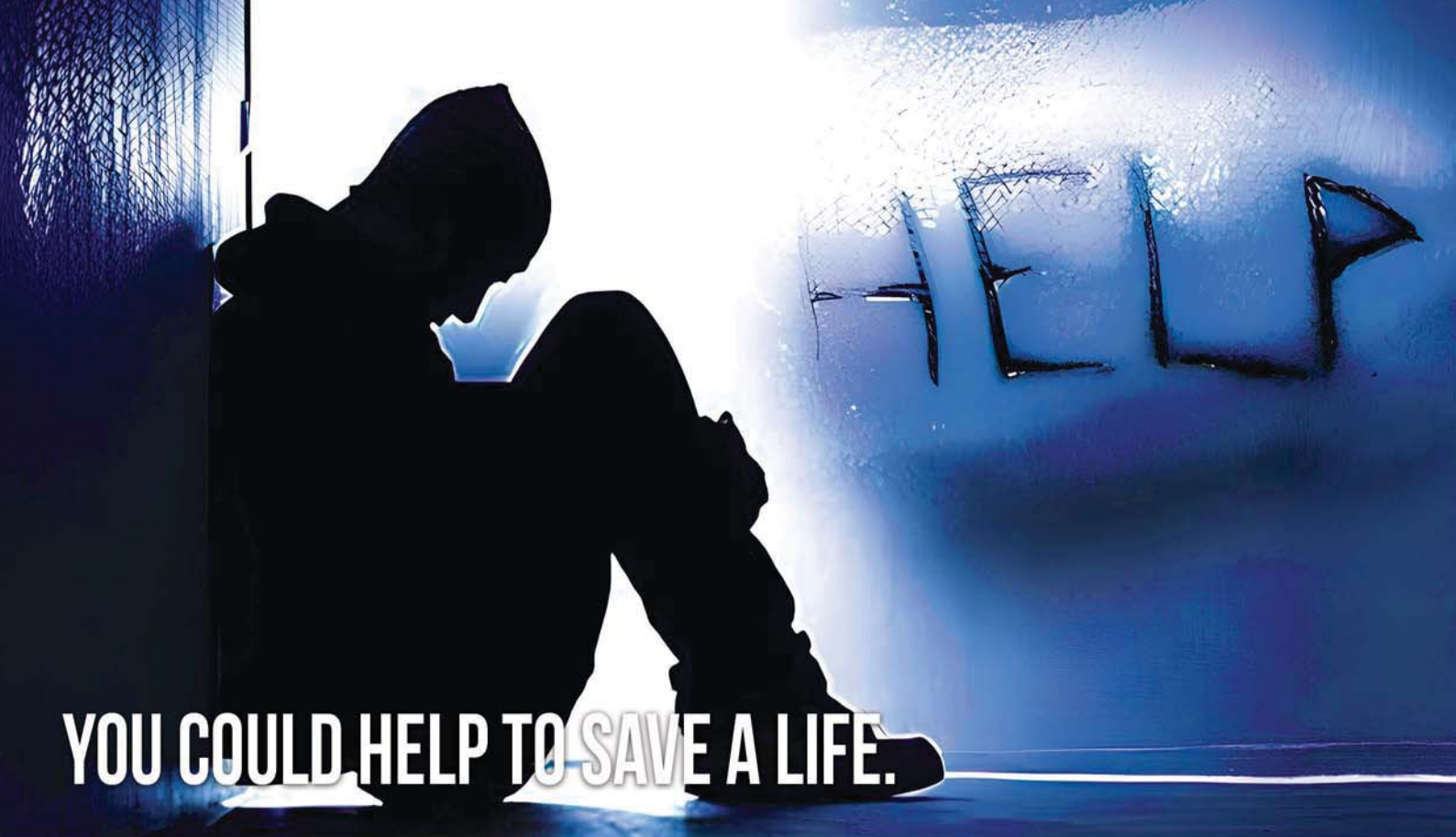
To learn more, download the detailed study on sustainable elephant care by scanning the QR code below:



This article is sponsored by



Peturday - Pattaya
Call : 098-471-4877
Line Official : @peturday



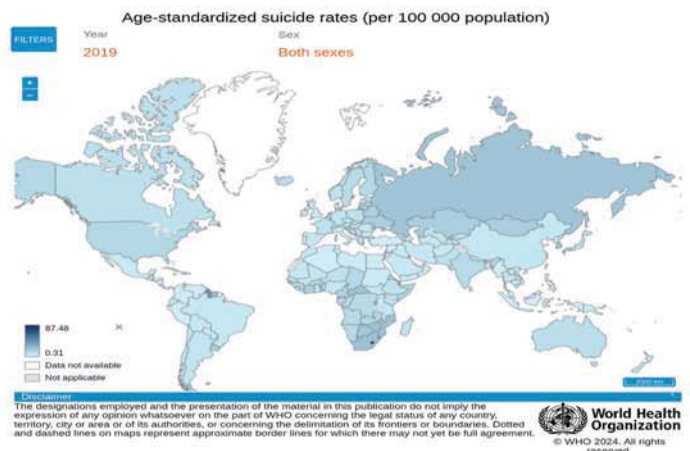
YOU COULD HELP TO SAVE A LIFE.

AMAR International Asia is known throughout Thailand as the best company to contact if you need any advice on repatriation or funeral arrangements. However, their services are not limited to the work they do with families and their arrangements for deceased loved ones. Often AMAR is brought in to help, locate and sometimes rescue missing loved ones when there is concern for their health and well-being. Both Jeff and Dao Mitchell have also worked within embassies in Bangkok where they have had experience with such cases.

I recently spoke to Jeff about the worrying trend in the increase of suicides. For although he doesn't profess to be a counsellor or mental health advisor he has been contacted and recounts a time at the British Embassy when he was contacted directly with the terrifying words "By the time you read this...". So along with Dao and the team at AMAR International, he wants to bring awareness to this problem before it is too late for the most vulnerable in our society. They are often tourists or expats from overseas who have gone missing, are in crisis or even more tragically have actually committed suicide.

Here in Thailand, the suicide mortality rate has increased dramatically by 32% from 2017 to the year 2022 and although the pandemic has been a major contributory factor, there continues to be a worrying increase. The problem is not unique to Thailand but a dangerously worrying global trend. Suicide rates in the U.S. saw an increase of 2.6% in 2022 from the year before with the rate amongst males particularly high. Generally men account for around 80% of suicide deaths with more women attempting suicide but not actually dying as a result. WHO (The World Health Organization) has stated that nearly 800,000 people die from suicide each year. It is a leading cause of death worldwide among young adults, adolescents, LGBTQ, veterans, and those suffering from chronic mental health conditions like depression and anxiety.

It is ironic to see an increase in suicide rates when there is more awareness than ever of mental health issues. Celebrities have spoken candidly about their problems in an attempt to bring more attention to the subject. Selena Gomez, Lady Gaga, and even Dwayne "The Rock" Johnson have all admitted to battling depression and thoughts of suicide. British comedienne Miranda Hart also openly discussed her problems with anxiety and depression, emphasising the importance of seeking help. However, despite all the attempts to raise awareness, as a society, do we still continue to stigmatise people suffering from psychological issues rather than more obvious physical problems?



The recent sad death of Liam Payne was met by some on social media with inappropriate jokes and derision. People focused on the fact that he was reported to have been under the influence of drugs and alcohol without considering the underlying causes. Despite having been a member of the mega-successful One Direction group and seemingly having the world at his feet, Payne had spoken publicly about his mental health issues: "There's times where that level of loneliness and people getting into you every day almost nearly killed me a couple of times... every so often, you're like, when will this end?"

If rich, affluent celebrities can suffer from loneliness, anxiety and depression - what hope for the rest of us? There are many reasons why people develop mental health conditions. Common factors that can influence mental health include social isolation or loneliness, severe or long-term stress, substance abuse or misuse. Here in Thailand, there are hotlines you can contact and please remember there's nothing wrong with asking for help, if you're feeling depressed, lonely or suicidal, you can dial the English-language hotline for

Samaritans of Thailand at 02 113 6789 (Press 2). The free service gives you access to staff who are knowledgeable in suicide prevention, though you don't have to be suicidal to benefit from the hotline.

The HOPE Taskforce's Mental Health Hotline 1323 established in 2019, has, since its inception, provided successful interventions in over 600 cases.

Jeff and Dao Mitchell would also like us to all help raise general awareness of mental health issues and reduce the stigma with a sympathetic awareness of what others may be going through. Especially in the run-up to Christmas, we can reach out to people who we think might be alone or lonely. Send them a message and see if they want to talk for a while? Who knows? You might just help to save a life.



WE'VE GOT YOU COVERED

**LOCAL CREMATIONS COVERING PATTAYA
AND ALL REGIONS OF THAILAND**

International Repatriation Services

Worldwide Funeral Services

Pre-planning Funerals Services

Email - Jeff.Mitchell@amarepatriations.com

Dao@amarepatriations.com

Web: <https://www.amarinternational.com>

Bio House Tower, 3rd Floor, 55 Sukhumvit Soi 39,

Klongtan Nua, Wattana, Bangkok 10110

Tel: +66 2 258 5946, Mob: +66 98 564 2961, +66 92 859 5616





What's on The Small Screen



Cobra Kai Season 6 Part 2

Continues the rivalry between Miyagi-Do and Eagle Fang Karate dojos, now merged into one.



Silo Season 2

The inhabitants of the Silo face new challenges as they uncover secrets about the its past.



Yellowstone Season 5 Part 2

Continues the Dutton family's ongoing struggle to maintain control of their sprawling ranch in Montana.



The Day of the Jackal Season 1

A manhunt gets underway to find the dangerous and elusive assassin only known as the Jackal.



Cross: Season 1

Alex Cross, a D.C. homicide detective and forensic psychologist, is tasked with hunting down a sadistic serial killer.



Sprint

Documentary series that follows the world's fastest athletes as they compete in the Diamond League, World Athletics Championships, and Olympic Games.



What's on The Big Screen



Gladiator 2

Paul Mescal, Pedro Pascal, Denzel Washington.

Set several years after the events of the first film, it follows Lucius, the son of Maximus Decimus Meridius, as he seeks revenge for his father's death.



Terrifier 3

Pedro Pascal, Kit Connor, Bill Nighy

Horror film that continues the story of Art the Clown, a murderous clown who has terrorized a small town.



Wicked

Ariana Grande, Jeff Goldblum, Cynthia Erivo, Michelle Yeoh

Musical fantasy film that tells the story of Elphaba, the Wicked Witch of the West, and Glinda, the Good Witch.



The Silent Hour

Joel Kinnaman, Sandra Mae, Mark Strong.

Thriller set in a post-apocalyptic world where a mysterious virus has rendered the entire population mute. Detective Jack Walsh is tasked with investigating a series of murders



Red One

Chris Evans, Dwayne Johnson, Lucy Liu

After Santa Claus is abducted, the North Pole's head of security teams up with the infamous bounty hunter to save the holiday season.

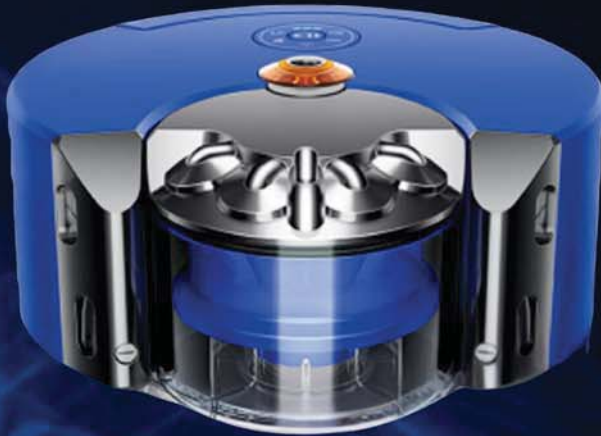


The Book of Solutions

Pierre Niney, Blanche Gardin, Françoise Lebrun

Dark comedy that follows Pierre, a man who believes he has found the answers to life's problems in a mysterious book.

Robotic vacuum cleaner the 360 Eye



The Dyson 360 Eye is a pioneering robotic vacuum cleaner that revolutionized home cleaning. Equipped with a 360-degree camera for precise navigation, it uses advanced algorithms to map and clean homes efficiently. Its powerful suction and unique self-righting feature ensure thorough cleaning, while its quiet operation makes it a discreet addition to any household.

dyson

Zone Air-Purifying Headphones



The Dyson Zone Air-Purifying Headphones are a groundbreaking innovation that combines premium noise-canceling headphones with advanced air purification technology. Equipped with a compact, high-efficiency filter, the headphones capture ultrafine pollutants and allergens from the air, delivering clean, purified air directly to the wearer's nose and mouth.



Dyson Airstrait™ straightener

Unveiling a new way to straighten, the Dyson Airstrait™ utilizes powerful airflow to smooth and align hair, eliminating the need for traditional hot plates. This innovative tool allows you to straighten from wet to dry, simplifying your routine and potentially reducing styling time.

Purifier Big+Quiet Air Purifier

Powerful and discreet solution for maintaining clean indoor air. Equipped with advanced filtration technology, it effectively captures harmful pollutants like allergens, dust, and even formaldehyde. Designed with a sleek and quiet operation, this purifier seamlessly blends into any home environment while delivering superior air quality.





SHOWCASING S.E. ASIAN MUSIC - Barry Upton

For over a year now, I've been invited to cast my opinion as a hit songwriter/producer on new releases for an international radio show called 'Jukebox Judgement'. I appear as the so-called 'pop expert', because of my many chart successes, alongside salubrious company including six times Grammy winner and CBE, Steve Lillwhite (U2, Simple Minds, Rolling Stones, etc.) and other big name hit producers.

During the past month or so, there's been a couple of music festivals showcasing S.E. Asian upcoming bands and artists and we, on J.J. have, over the past year, also featured submissions from Vietnam, Philippines, Laos, Cambodia, Indonesia, Singapore and, of course, Thailand. We were invited to attend these festivals as it was felt we could aid in the promotion of S.E. Asian artists to other territories in the Western world. In any case, trips to Bali and Singapore ain't a bad way to spend one's time.

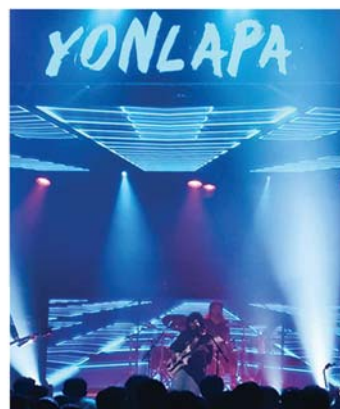


Firstly, the 'Axean Festival' took place on the beautiful Indonesian island of Bali and three of us Jukebox Judgement regulars were invited as music business professionals. Together with partner KayJay and show host/J.J. originator Dawn Parry, we stayed at Steve Lillwhite's brand new rock star style mansion in Seminyak, Bali and actually broadcast a J.J. show directly from there. British born but now Singaporean resident Joe Eades was our music co-ordinator. The standard of new fresh, original music at the 'Axean Festival' was a joy to behold and the live enthusiastic fifteen minute sets on four stages definitely held our attention, keeping us seasoned critical music producers entertained.

The second one we attended was the 'BayBeats' festival in Singapore at which I held an 'art of songwriting' workshop, with J.J. host Dawn, for many interested local artists. I was impressed by the high standard of songwriting and creativity being showed to us but we managed to offer some careful constructive criticism which was enthusiastically received. Then the main live events took place featuring more upcoming artists relishing having the opportunity to spread their music further across the world.

The presentation, sponsored by the Singaporean government, was spectacular, especially on the main outdoor stage at the Esplanade with Marina Bay Sands as a backdrop. In particular, I was impressed by an indie three piece band from Taiwan called 'Outlet Drift' who included aspects of aboriginal hill tribe music in their performance.

Another impressive up and coming young singer was Thai girl 'Yonlapa', who, with her all Thai band featuring a very original sounding guitarist, showed a lot of personality and highly accessible songs. I believe she has a fab future ahead



.So, all in all, S.E. Asia seems to be producing a lot of great new music and we will be highlighting the best on 'Jukebox Judgement' (www.newdown.fm). Check out Barry's current output on his two YouTube channels **FAB BAZ MUSIC TV** and **FAB BAZ SUNSHINE TV**



KAREN SERVICES

VISA AND PROPERTY

Now Availbale at Karen Services

1. Visa Extention
2. Visa Run to Cambodia
3. TM 30 Report
4. The 90 days report
5. Company registration and Account
6. Taxi Booking
7. Legal Consulting
8. Translations and interpretation (Thai to English and English to Thai)
9. Property for Sale and for Rent.



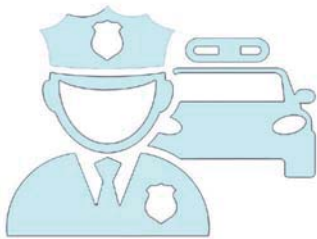
งานบริการที่มีในร้านคาเรน

1. บริการรับต่อวีซ่าต่างชาติ
2. บริการไปต่อวีซ่าชายแดนกัมพูชา
3. บริการรายงานที่พัก ตม. **30**
4. บริการรายงานตัว **90** วัน
5. บริการรับจด จัดตั้งบริษัทแบบทำบัญชี
6. บริการจองรถแท็กซี่
7. บริการให้คำปรึกษาด้านกฎหมาย
8. รับแปลเอกสารและแปลสดตามงาน (แปลไทยเป็นอังกฤษและอังกฤษเป็นไทย)
9. อสังหาริมทรัพย์ สำหรับซื้อและขาย

TEL: +66 87 941 3986 Thepprasit Road Soi 7



IMPORTANT TELEPHONE NUMBERS



POLICE

Emergency Hotline: 191
 Pattaya Police Station: Soi 9 Pattaya
 Phone: 038 420- 802, 038-420 805 0-3842-9325
 Banglamung Police Station, Sukhumvit Highway)
 Phone: 038 221 800, 038 221 331
 Tourist Police: Phratamnak Road
 Emergency Hotline: 1155
 Phone 03841 4669, 03842 5937,

AMBULANCE AND HOSPITALS

General emergency number 191 can be used or 1669
 Pattaya International Hospital
 PhoneTel: 038 428 374-5. Tel: 038-427 575
 Bangkok Hospital Pattaya
 PhoneTel: 038-259-999. 0-3825-9911
 Pattaya Memorial Hospital
 PhoneTel: 038 488 777. 038-429 422



FIRE

Emergency Phone: 199
 Fire Brigade Pattaya
 PhoneTel: 038-425-943,
 Fire Brigade Naklua
 PhoneTel: 038-221-000,

SEA RESCUE

Marine Police
 Phone. 038-423 666
 Sea Rescue
 Phone 038-488 134

ELECTRICITY

Electricity Pattaya
 Phone 0-3842-6463, 0-3842-8502
 Electricity Banglamung
 Phone 0-3822-1007

WATER

Water Works Banglamung
 Phone 0-3822-1463
 Water Works Pattaya
 Phone 0-3822-2462/5

WASTE DISPOSAL

Garbage Collection
 Phone 0-3842-9494

SUDOKU NOVEMBER 2024

MEDIUM

SOLUTIONS ARE ON PAGE 49

			4		9		
					5	1	
4			8				7
			8				
	9		4	2	7	5	
	6	1					
		2					
			1			8	
	1	9	3	7			

6			4			1	
		5					
7			5	6			3
				9			5
		2				6	
			4	1			7
8	2	7					
				5		4	
1						6	7

		4	8	6			
7			4				6
		9	1		7	3	
		2			9		
						7	1
9					2		
			1			4	
	8				1		
		7	2	4			

6						8	
5			8	7		4	1
							5
		5		2			
8			6	7	9		
		9		1		7	
			4				8
		7		9			
		4		5			

HARD

						9	
		5	8		6	7	
							4
1				2		9	6
	4					7	
6	9		3				
	1			3			8
					5		1
	3	9	4	1			

	7			5			
				8	9		1
					3		2
	1		7				9
4	5						8
		6	8				5
		4				2	
			6	3			
		3		4			

8				9			2
						2	6
			2			5	9
					7		
		5			1		2
6			3			8	
	2			4	3		
			9			2	5
	5	3	8				7

							8
	2			5		3	1
			8	2		7	
		8	4				
		1	6	7	5		
4							9
	6			1			3
					3		6
							2



Bringing Businesses Together

Are you looking for a partner to help your business or business community thrive?

At BBX we are an experienced and committed team, designed exclusively to help businesses grow

Who we are?

BBX is a community of business owners with a solution to immediately help with business cashflow needs.

How do we do it?

- We provide interest free credit to business owners in our community
- Business owners use this credit to purchase products and services within the community to help their business grow "No Cash Outlay"

What's our commitment?

- We will continue to build the BBX Business community providing sustainable opportunities focused on business needs
- We will support business initiatives and partnerships, nurturing them in parallel with new ideas.
- We will provide a secure financial platform for transaction management

Your Commitment?

- Our business community transacts via business trade credits. A willingness to be part of this extra revenue stream
- Our community of business owners connects and supports each other via fair trading terms, an understanding that strong relationships prosper with respect

Reach out to us, we are here to help all business grow!

www.bbxworld.com



SOLUTIONS

MEDIUM

1	2	7	5	4	3	9	6	8
9	8	3	6	7	2	5	1	4
4	5	6	8	9	1	2	3	7
2	7	4	1	8	5	3	9	6
3	9	8	4	2	6	7	5	1
5	6	1	7	3	9	8	4	2
6	4	2	9	5	8	1	7	3
7	3	5	2	1	4	6	8	9
8	1	9	3	6	7	4	2	5

6	3	9	2	4	7	5	1	8
2	4	5	1	8	3	7	9	6
7	1	8	5	6	9	2	3	4
3	7	1	8	9	6	4	2	5
4	9	2	3	7	5	6	8	1
5	8	6	4	1	2	9	7	3
8	2	7	6	3	4	1	5	9
9	6	3	7	5	1	8	4	2
1	5	4	9	2	8	3	6	7

3	2	4	8	6	7	5	1	9
7	5	1	4	9	3	8	2	6
8	6	9	1	5	2	7	3	4
1	7	2	5	8	9	4	6	3
5	3	8	6	2	4	9	7	1
9	4	6	7	3	1	2	8	5
2	9	5	3	1	8	6	4	7
4	8	3	9	7	6	1	5	2
6	1	7	2	4	5	3	9	8

6	4	1	2	9	5	3	8	7
5	9	2	8	7	3	6	4	1
3	7	8	1	4	6	2	9	5
7	6	5	9	2	4	8	1	3
8	1	3	5	6	7	9	2	4
4	2	9	3	8	1	5	7	6
9	5	6	4	1	2	7	3	8
1	8	7	6	3	9	4	5	2
2	3	4	7	5	8	1	6	9

HARD

4	8	1	2	7	3	5	9	6
9	2	5	8	4	6	1	7	3
3	7	6	5	9	1	8	2	4
1	5	3	7	2	4	9	6	8
2	4	8	1	6	9	7	3	5
6	9	7	3	5	8	4	1	2
5	1	4	6	3	7	2	8	9
7	6	2	9	8	5	3	4	1
8	3	9	4	1	2	6	5	7

2	7	1	4	5	6	3	8	9
6	3	5	2	8	9	7	1	4
8	4	9	1	7	3	5	2	6
3	1	2	7	6	5	4	9	8
4	5	8	3	9	1	6	7	2
7	9	6	8	2	4	1	3	5
9	8	4	5	1	7	2	6	3
5	2	7	6	3	8	9	4	1
1	6	3	9	4	2	8	5	7

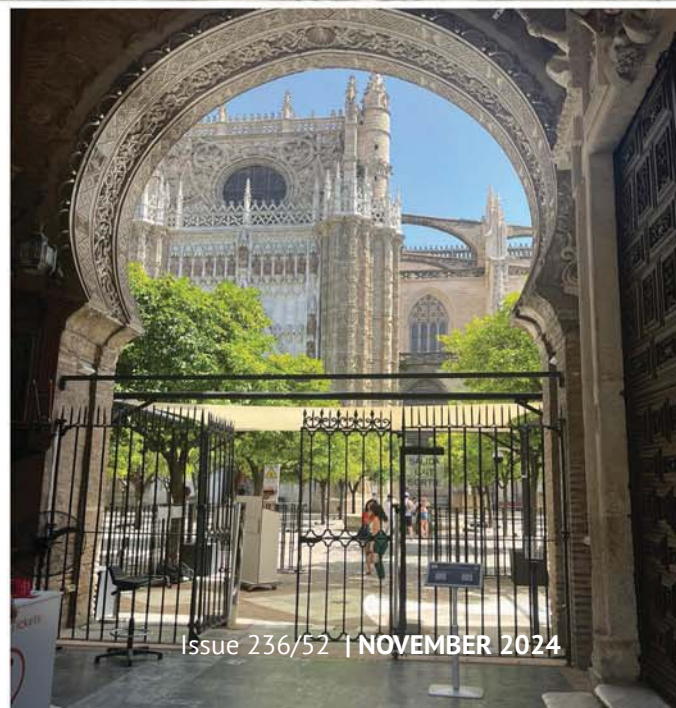
8	3	4	7	9	5	1	2	6
5	9	2	1	6	8	4	3	7
1	6	7	2	3	4	5	8	9
2	8	9	4	5	7	3	6	1
3	4	5	6	8	1	7	9	2
6	7	1	3	2	9	8	4	5
7	2	6	5	4	3	9	1	8
4	1	8	9	7	6	2	5	3
9	5	3	8	1	2	6	7	4

5	9	7	3	4	1	2	6	8
8	2	4	5	6	7	3	1	9
6	1	3	8	9	2	7	4	5
2	5	8	4	3	9	6	7	1
9	3	1	6	7	5	8	2	4
4	7	6	1	2	8	5	9	3
3	6	5	2	1	4	9	8	7
7	4	2	9	8	3	1	5	6
1	8	9	7	5	6	4	3	2

WHY SEVILLE IS PERFECT FOR A CITY BREAK



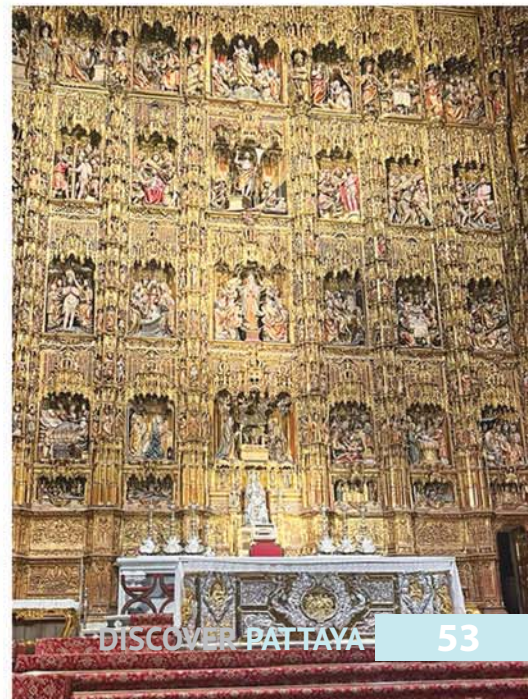
It's getting close to the end of the year and many of us here in Pattaya are considering heading off to Europe to visit family and friends for Christmas. While doing that it's often a good idea to add a mini break to long haul travel arrangements and Spain is ideally placed for this. Although the temperatures are not as warm as in earlier months there is often more sunshine than in other parts of Europe. Also you can find reasonably priced flights with last minute accommodation deals. So, if you are considering Spain, then I would definitely recommend visiting Seville. It's such a beautiful place with so much to see and do, plus really great food and drink. It definitely makes for a fabulous city mini break destination rather than some of Spain's more beachy locations.



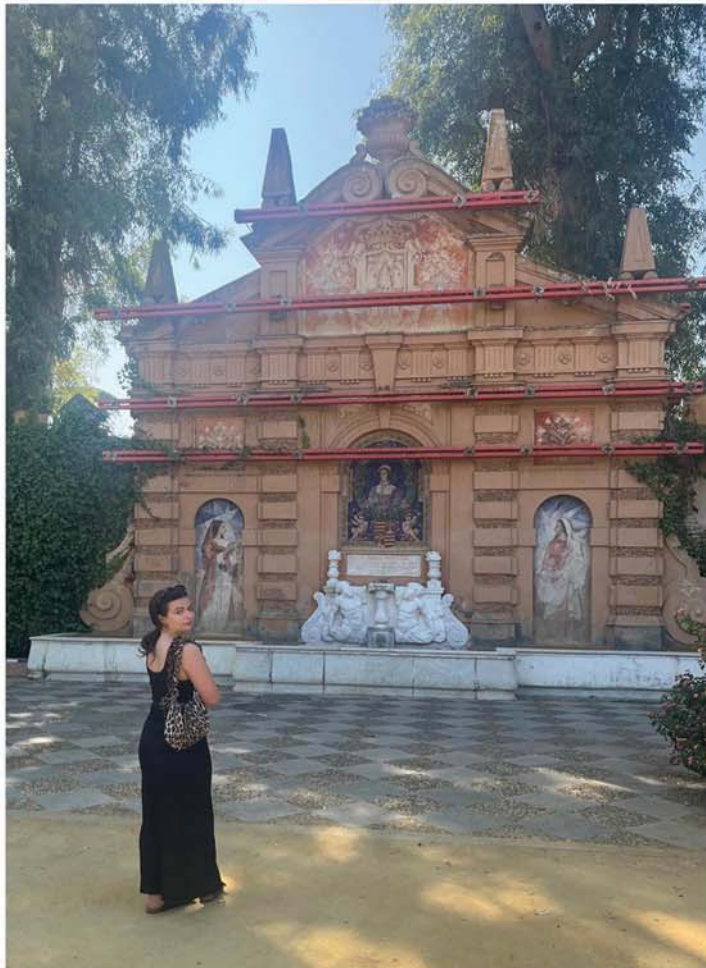
If, like me, you believe a city break should be all about seeing the sites on foot, then I would recommend you head straight for Seville's Historico Antico. As the name implies it is the oldest part of the city, formed around Seville's magnificent fifteenth century cathedral. There are tiny pavements which can accommodate just one stroller at a time, and cobbled streets where only the occasional taxi will slowly cruise by. The taxis are on the lookout for tourists who have had enough of walking or have maybe got lost amongst the windy turning roads. Even your GPS may find it challenging here with all the twists and turns that cause it to constantly need to recentre.



However, if you're hoping to find the unexpected then it's fun to just ignore your mobile phone altogether and see where your sense of direction may take you. If you do this you can suddenly happen upon a lovely square with a perfect cafe in which to take a pit stop. You then might choose to sit and enjoy a freshly squeezed Seville Orange Juice and let your imagination run away with you. In such a setting it's easy to imagine a herd of bulls charging in from one of the side turinings. But don't worry that doesn't happen in Seville, it takes place every 7th to 14th of July in Pamplona - if you fancy joining in with The Running of the Bulls!



After a refreshing orange juice at one of the charming al fresco cafes you might decide to have an Aperol Spritz or perhaps some Sangria?. Then glance at the menu to find some dish which includes the local Iberico Ham which is a must to try while you are in this part of Spain. However, it's not cheap so another idea would be to visit a local Carrefour where you'll be able to pick some up for a fraction of the price and with some accompanying olives, russian salad and wonderful bread get set for a perfect picnic.

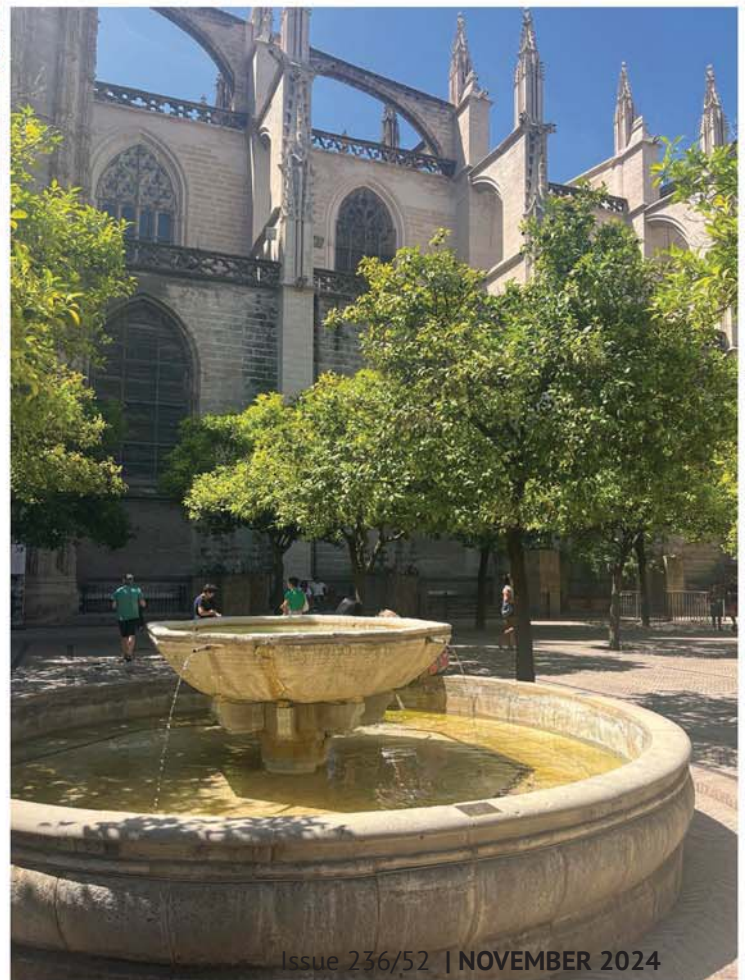


The place to enjoy this? Either by the river where there are plenty of benches from which to watch locals on bikes or running along by the river bank. Teams rowing its length or people on electric scooters and segways making their way through the tree lined paths.

On the subject of sightseeing we went to Seville's aforementioned Cathedral which is the largest Gothic cathedral in the world, architecturally it's very impressive and also has a spectacular interior. Well worth a visit although you must be sure to dress respectfully and be quiet as it is often in use.

We also visited the Royal Alcázar, a breathtaking palace complex that combines Mudéjar, Gothic, Renaissance, and Baroque styles. With lush gardens all around it also makes a perfect open air setting for live performances and concerts. Whilst in Seville we were lucky enough to see The Gypsy Kings there which was amazing and so fitting with all the Catalonian guitar playing and even a flamenco dancer on stage as well!

However, even if you are just wandering around this beautiful city you're sure to enjoy the beautiful buildings everywhere - small art galleries, ornate churches, concealed courtyards and moorish influences everywhere. So make sure you are ready to strike a pose and make some memories!





Overture Aircraft will be faster than Concorde

American start-up Boom Supersonic is planning to develop the very first supersonic aircraft powered by 100% sustainable fuel. The aircraft, named Overture, would succeed Concorde in providing ultrafast connections between Europe and the United States, more than 20 years after the latter ceased operation. The new aircraft also echoes its predecessor's unique, long and slender design.

Boom Supersonic is currently flying a demonstrator, the XB-1, over the Mojave Desert in California. A first supersonic flight is expected by the end of 2024, following the green light given from the Federal Aviation Administration (FAA). All these tests are designed to ensure the aircraft's reliability and maneuverability. Above all, they lay the foundations for the firm's future Overture plane.

Boom Supersonic's planned supersonic aircraft is particularly ambitious. On paper, Overture is presented as the very first supersonic high-speed aircraft to have zero carbon footprint, flying on sustainable aviation fuel (SAF). This type of fuel is produced from various more or less renewable resources, such as biomass, algae, agricultural or food waste, or hydrogen. Dimensional Energy and Air Company will supply up to 30 million liters of SAF per year for the Overture flight test program.

Boom Supersonic envisions an aircraft capable of cruising at Mach 1.7, or nearly 2,100 km/h, at an altitude of 18,000 m, with up to 80 passengers on board. Its appearance is reminiscent of Concorde, especially as it will be 60 m long, compared to 62 m for its famous predecessor. If all goes well, the Overture should be unveiled in 2025, fly in 2026 and carry its first passengers by 2029, flying at twice the speed of today's fastest passenger jets.

Several airlines (American Airlines, United Airlines and Japan Airlines) have already shown an interest in this aircraft, pledging to order several models when it becomes available.

There's no shortage of supersonic aircraft projects in the pipeline. For example, by 2035, the Swiss start-up Destinus aims to have hydrogen-powered aircraft flying between Frankfurt and Sydney in just four hours, versus 20 hours today. Its aircraft will be powered by liquid hydrogen and will emit no CO₂. Meanwhile, a Chinese company wants to revolutionize suborbital flight and compete directly with the airlines by offering ultra-fast space travel. The idea is to link two major cities like Beijing and Dubai in just one hour.



LOY KRATHONG FESTIVAL OR THE FLOATING FESTIVAL



The Loy Krathong festival is a famous Thai tradition which takes place on the evening of the full moon on the 12th lunar month of the Traditional Thai Calendar. Being dependent on the cycle of the moon it may change from year to year but generally takes place in November. This month is a peak flood tide period for all rivers in Thailand, particularly at the central river basin of the Chao Phraya River in Ayutthaya and Bangkok. Therefore It is an appropriate time for this celebration.

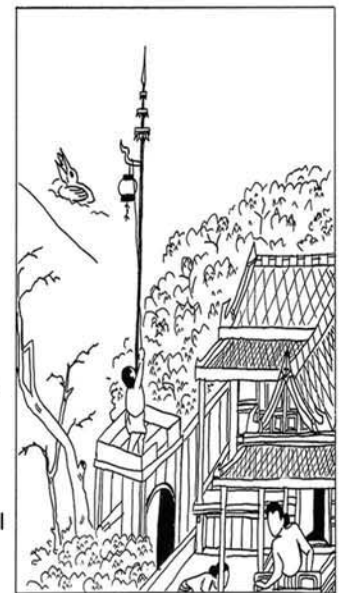
The word Krathong means a buoyant decorated with lit candles and flowers. Traditionally Thais believe that the Loy Krathong festival is to ward off all misfortunes by putting coins or hair cuttings into a Krathong with flowers and lit candles to then let it float away on the river. Also, to ask for forgiveness from the Goddess of Water after having washed everything in the river during the past year. For Buddhists it is also a festival to worship the Lord Buddha whose footprint is believed to exist at the bottom of the Num Matha Natee River in central India.

Today, as well as on rivers, people also float their krathongs on lakes, ponds, out to sea and even across swimming pools. They celebrate by wearing Traditional Thai clothes and often hold a party with fireworks and crackers until late at night. Some people light and release small, hot balloons made of paper into the sky. In Chiangmai for example, there are traditional huge paper hot air balloon competitions. However, these can affect the safety of aviation and so there are now specific controls of when balloons can be launched with specific time schedules so the balloons do not interfere with flights taking off and landing.



Loy Krathong originates from the age of Sukhothai, the first capital for the Thai people. It was considered The Golden Era of Thailand (1900 B.E. or 1350A.D) when people lived peacefully and King Li ruled. At that time. Lady Noppamas, a concubine of the King, wrote many stories about Sukhothai culture. For example: making flower trays to welcome guests of the city and ,at full moon night of 12th. lunar month, hanging lotus shaped lanterns on a rack to worship Lord Buddha. This is the origin of the Loy Krathong Festival.

Many hundreds of years later in the era of Ayutthaya and Rattanakosin (Bangkok), lanterns in lotus shapes were raised to the tops of poles to worship the Lord Buddha. These were then lowered down and put on to the river to worship the Goddess of Water. This ceremony is the royal ceremony today for the general public, usually only one krathong per person is sent floating out onto the water.



ประเพณีลอยกระทงและความเป็นมา

วันลอยกระทง ตรงกับวันขึ้น 15 ค่ำ เดือน 12 หรือ เดือนยี่ ตามปฏิทินล้านนา ซึ่งชาวเหนือเรียกกันว่า “ยี่เป็ง” แปลว่าวันเพ็ญเดือนยี่ ตามปฏิทินไทยคือวันเพ็ญเดือน 12 ซึ่งเป็นวันเพ็ญสุดท้าย ส่งท้ายปีทางจันทรคติ ในปลายฤดูฝนต้นฤดูหนาว คืนวันวันลอยกระทง จะเป็นคืนที่น้ำขึ้นสูงสุด เหมาะสำหรับการละเล่นเพลงเรือพื้นบ้าน จึงถือเป็นเทศกาลใหญ่ของไทย ส่งท้ายปี ในสังคมปัจจุบัน ชาวไทยนิยมนำกระทงที่เย็บเป็นทรงดอกบัว จุดเทียนและใส่ดอกไม้ลงไป เพื่อนำไปลอยในแม่น้ำ ลำคลอง และ แหล่งน้ำทั่วไป โดยมีคติความเชื่อต่างๆกัน โดยหลักคือ 1. บูชารอยพระบาทขององค์สมเด็จพระสัมมาสัมพุทธเจ้า ที่กั้นแม่น้ำนันทานที 2. ขอภัยต่อพระแม่คงคา จากการที่เราได้ชำระล้างสิ่งสกปรกลงไปในแหล่งน้ำ 3. ลอยเคราะห์โรคภัยไข้เจ็บไปกับกระทง ซึ่งมีผู้นิยมใส่เงินหรือเส้นผมลงไป อนึ่ง พิธีการลอยกระทง มีแตกต่างกันไปตามแต่ละภูมิภาค อีกทั้งยังมีการละเล่นดอกไม้ไฟ ควบคู่กันไปด้วย ทางภาคเหนือ จะมีการประกวดโคมลอยของแต่ละวัดและชุมชน เป็นโคมลอยขนาดใหญ่ ทรงสี่เหลี่ยมคล้ายแท็งค์น้ำ จุดคบไฟใส่ความร้อนลงไป แล้วแขวนประดับไปด้วย เมื่อโคมร้อนได้ที่ จึงปล่อยขึ้นในอากาศ และประดับก็จะแตกเป็นระยະๆ ส่งเสียงให้ผู้คนแหงนหน้ามองบนท้องฟ้า



จองเปริยง ลอดขุดลอยโคม
ต้นแบบ “ลอยกระทง”

f Silpawattanatham i Silpawattanatham v Silpa_Mag t Silpa_Mag

ถ้าเรามองย้อนไปถึงต้นกำเนิดของการลอยกระทง จะเริ่มในยุคกรุงสุโขทัยเป็นราชธานี ตามตำรับท้าวศรีจุฬาลักษณ์ซึ่งนางนพมาศได้เขียนเล่าเรื่องประเพณีต่างๆในยุคนั้น ได้แก่ การจัดพานดอกไม้สองชั้นไว้ต้อนรับแขกบ้านแขกเมือง พระราชพิธีจองเปรียงลอยพระประทีป โดยชักโคมขึ้นไปแขวนไว้เป็นราว เพื่อบูชาองค์สมเด็จพระสัมมาสัมพุทธเจ้า การละเล่นพลุดะไลไฟพะเนียง และลอยกระทงในตระพังเงินตระพังทอง (อ่างเก็บน้ำซึ่งกรอริฐไว้จำนวนมาก เพื่อใช้เป็นอ่างเก็บน้ำในยุคนั้น) ต่อมาในยุคกรุงศรีอยุธยาและกรุงรัตนโกสินทร์ มีพระราชพิธีลุดขุดลอยโคม คือการชักโคมขึ้นยอดเสาเพื่อบูชาองค์สมเด็จพระสัมมาสัมพุทธเจ้า แล้วลุดโคมลง นำไปลอยในแม่น้ำเพื่อบูชาพระแม่คงคา ประชาชนทั่วไปในปัจจุบัน ทั้งชาวไทยและต่างประเทศต่างก็ลอยกระทงลงในแม่น้ำ และ แหล่งน้ำต่างๆ อีกทั้งเล่นโคมลอยขนาดเล็กและดอกไม้ไฟ อย่างที่เห็นกันทั่วไป

จังหวัดทางภาคเหนือคอนบนอย่างเชียงใหม่และลำปาง มีการจัดประกวดกระทงใหญ่ และ นางนพมาศ โดยแท้ไปบนถนนสายหลักของเมือง แล้วนำไปลอยในแม่น้ำ.....



Prime Land for Sale in Pattaya's Prestigious Pratamnak Area!

Location: 352/947 and 352/10, Pratamnak (Between Sois 4 & 5) Selling Price: 39,900,000 Baht

Total Land Area: 1,025 sqm

This exclusive property offers a unique investment opportunity in the heart of Pattaya's most sought-after neighborhood. Spread across four meticulously divided blocks, this land is perfect for a discerning investor looking to create a luxurious living space or a profitable development project.

Land Details:

- Block 1: 333 sqm
- Block 2: 167 sqm
- Block 3: 167 sqm
- Block 4: 358 sqm Key Features:
 - Prime corner block with wide frontage
 - Gently sloping terrain ideal for underground parking



Current building permits for three luxury three-level homes. Imagine crafting your dream residence or developing high-end homes in a prime location known for its exclusivity and charm.

The land's advantageous position between Sois 4 & 5 in Pratamnak guarantees convenience and prestige.

Ready to Build: Benefit from the existing building permits and a reputable builder with competitive quotes. This ensures a seamless transition from purchase to development.

Contact me on 094 757 9328 to arrange viewing



Opportunity Awaits at Cosy Beach

Elderly Italian Restaurant owner is planning on retiring and handing over to someone younger with more energy to reinvigorate what was once a successful business.

He is looking for a hand over fee of 1.8 million baht for the restaurant along with the 6 guest rooms situated above.

Situated the other side of the Chocolate Factory car Park the double fronted restaurant faces out to sea and has some hotels nearby who's guests often come for food. The existing staff will be available to carry on working under the new owner the fully equipped kitchen will remain.

Contact me to arrange a viewing and for more information on 094 757 9328





BEAUTIFUL VILLA RESORT AVAILABLE FOR SALE



LOCATION: 300 METRES OPPOSITE THE ENTRANCE TO PHOENIX GOLF CLUB.

4,232 SQUARE METRES

PRICE AND MORE INFORMATION ON APPLICATION

Contact 094 757 9328 for more details or email pattayatrader@pattayatrader.com

DISCOVER PATTAYA WAS DELIGHTED TO ATTEND TRAVEL DAILY MEDIA'S TRAVEL TRADE EXCELLENCE AWARDS 2024 AT THE INTERCONTINENTAL BANGKOK WITH SURPRISE GUEST LEGENDARY FOOTBALLER EMILE HESKEY





Secret Garden Condominium



Introducing the epitome of luxury living in Pattaya's most coveted locale – "Secret Garden Condominium". Nestled within the prestigious district of Pattaya, this development unveils the essence of modernity, comfort, and an elevated lifestyle.

Boasting a total of 160 meticulously designed units, "Secret Garden Condominium" promises an unparalleled living experience. Whether you seek a permanent residence or a lucrative investment opportunity, this condominium caters to your...



Pre Sale Secret Garden Condominium With a great location in the heart of Pattaya, modern designed low rised building, 160 units total. With a usable living area from 35.40 sq.m. to 105.76 sq.m. Spacious apartments with balcony. Comfortable in every detail, green zone, area for outdoor recreation. Beautiful garden on the roof, panoramic view. Suitable for Residents and Investors.



Luxury amenities Two fitness swimming pools, relaxation area, underground parking, co-working, outdoor lounge area, gym, sauna and children's area. With 24-hour security and video surveillance and rental management This condo have 1 bedroom and 1 bathroom with balcony on the 4th floor, usable living area is 35.40 square meters. Modern kitchen and bathroom. Fully furnished.

For information about this project contact Gustaf Real Estate.



GUSTAF REAL ESTATE

Phone 090 250 36 21
www.gustafrealestate.com
209/14 M10 Soi Khao Talo



GUSTAF REAL ESTATE



Collingbourne Auctioneers

The Easy Way To Buy or Sell Anything



Your favourite auctioneer John Collingbourne and his team are now in their new home on Chee Chan Road

With regular deliveries of beautiful antiques, furniture, paintings, porcelain and all kinds of household goods

It's the perfect place to buy or sell pre-loved goods by private treaty 6 days a week.

THE GAVEL RESTAURANT & BAR

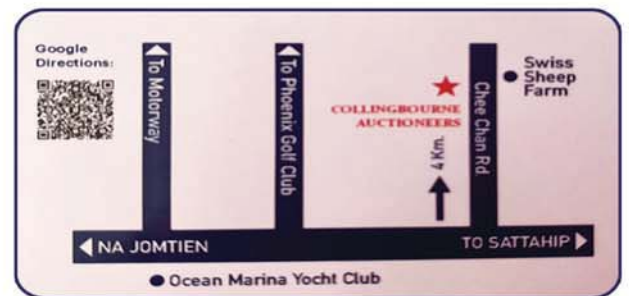
Open Monday - Saturday 9:00 am - 8.00 pm

Available for parties and private functions

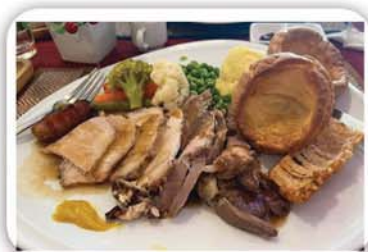
Amazing breakfasts & great food cooked on the premises

Saturday Roasts available from 12pm

Fish & Chips - Eat in or Take Away



The very popular auction takes place every Saturday from 11 am and also on line.



The Spider in the Web



GRAND SOLAIRE NOBLE



HARMONIA CITY GARDEN



EDEN LUXURY VILLAS



SKYPARK LUCEAN



**BEACH FRONT HOTEL & RESORT
MAE PHIM**



GUSTAF REAL ESTATE

Phone 090 250 36 21

www.gustafrealestate.com

209/14 M10 Soi Khao Talo



GUSTAF REAL ESTATE